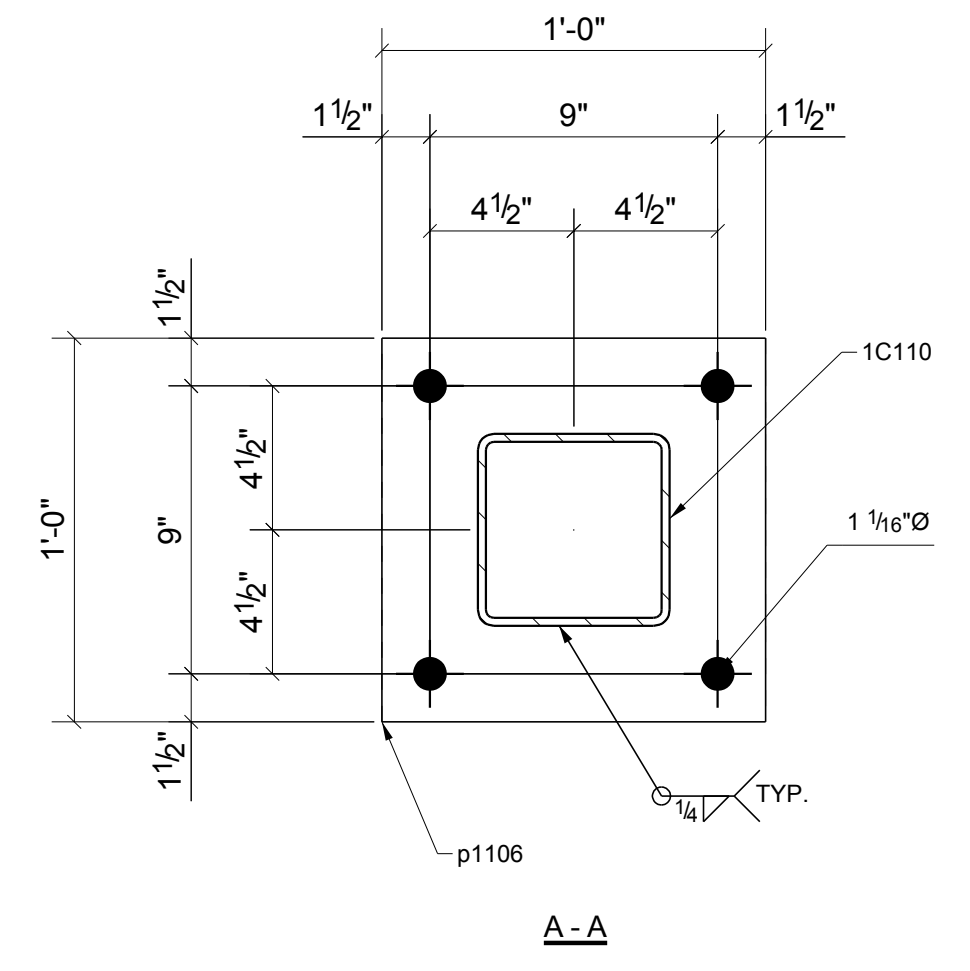
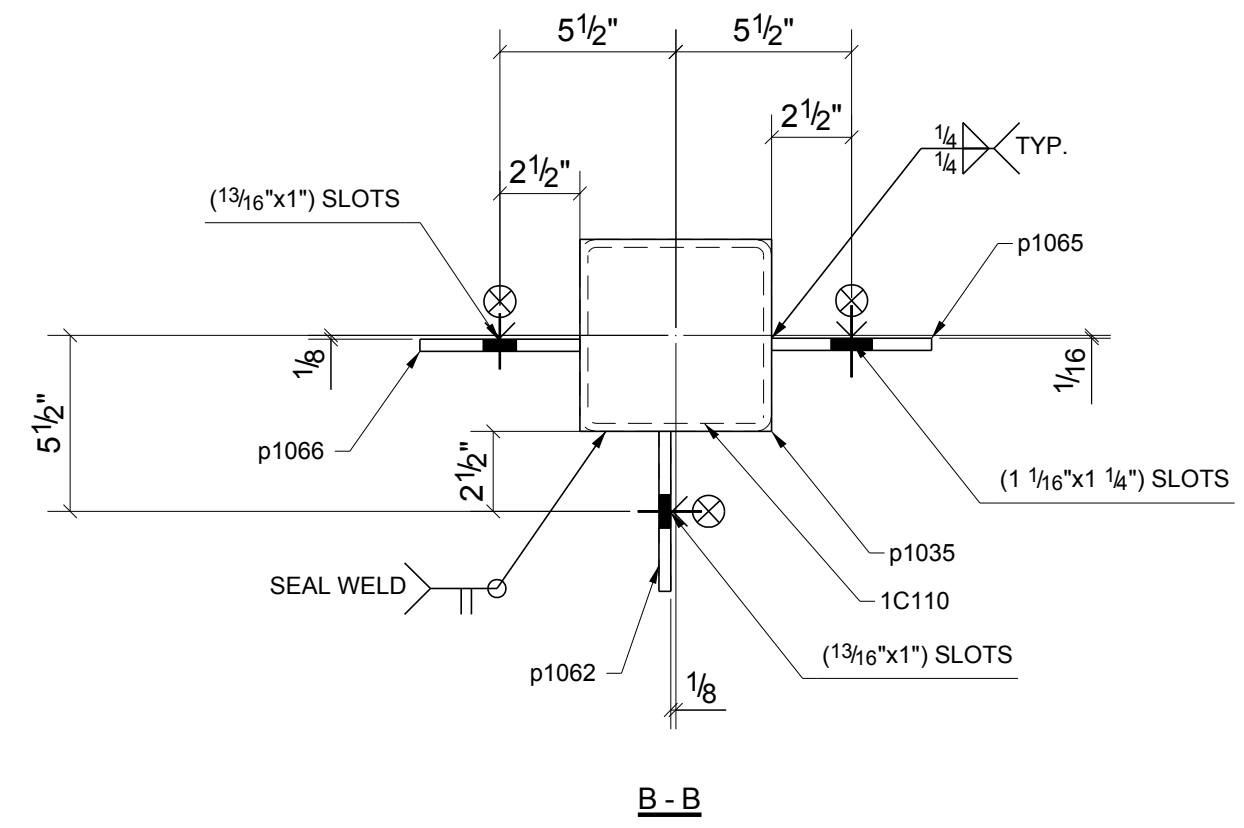
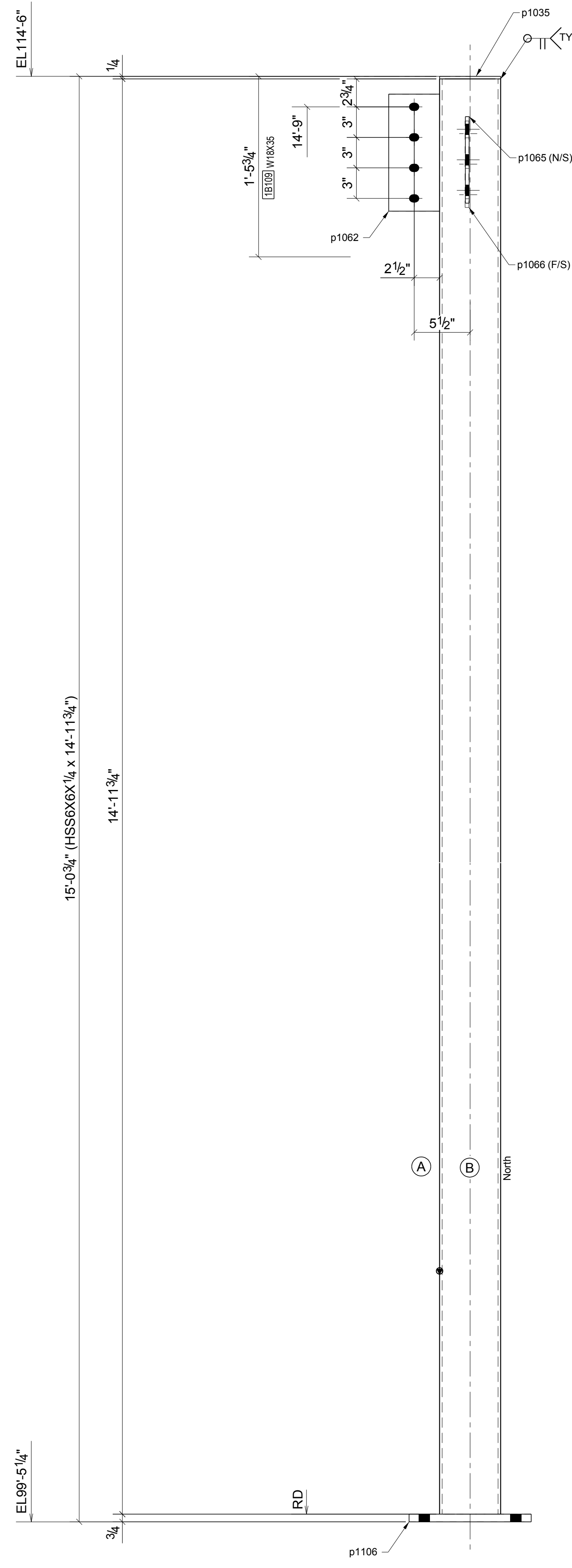
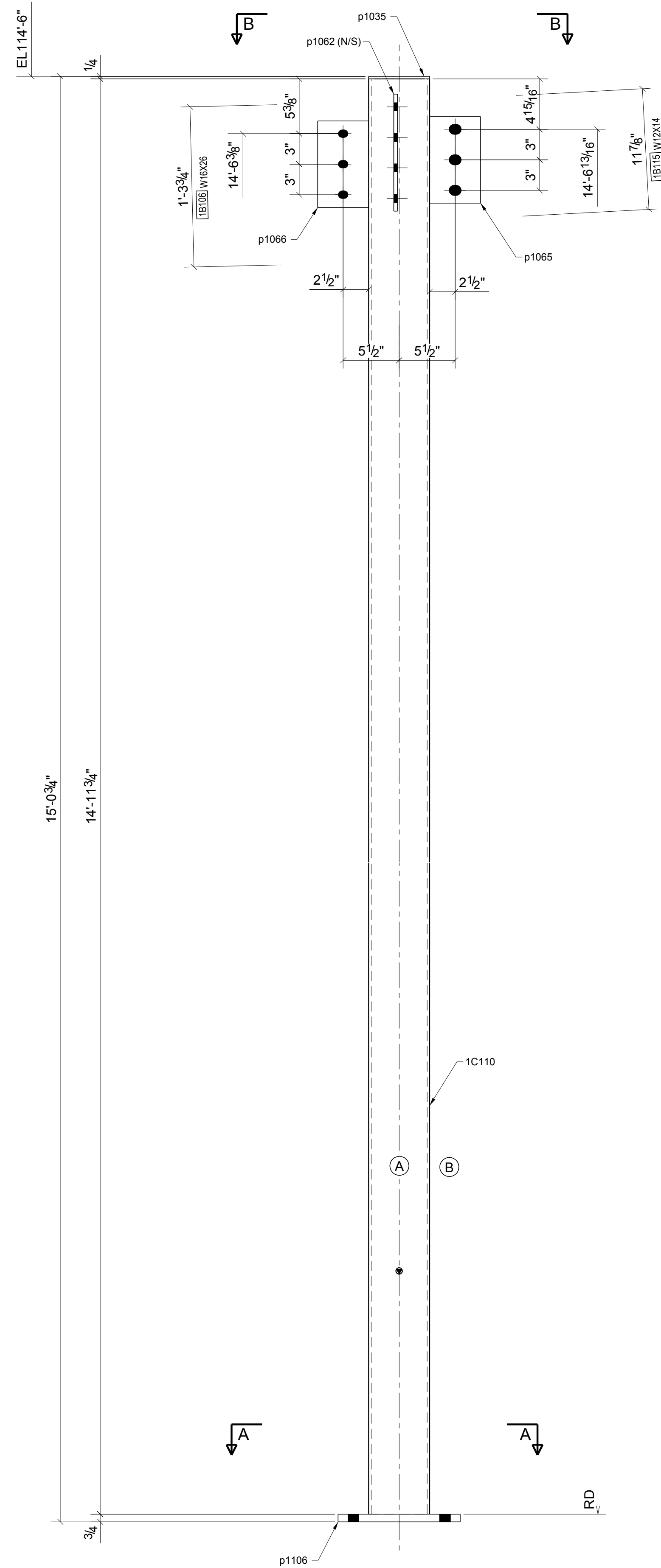


Qty	Qty	Piece	Description	Length	Weight	Remarks	Adv	Steel
Est	Total	Mark			Total		Mill #	Grade
1	1	1C110	COLUMN					
1	1		HSS6X6X1/4	14'-11 3/4"	267	502 STD PRIMER	hs71	A500-GR.B
1	1	p1035	PL 1/4"X6"	0'-6"	3	STD PRIMER		A36
1	1	p1062	PL 3/8"X6"	0'-11 1/2"	6	STD PRIMER		A36
1	1	p1065	PL 3/8"X5"	0'-8 1/2"	5	STD PRIMER		A36
1	1	p1066	PL 3/8"X5"	0'-8 1/2"	5	STD PRIMER		A36
1	1	p1106	PL 3/4"X12"	1'-0"	31	STD PRIMER		A36



**STD PRIMER  
 ONE - COLUMN - 1C110**

REF DWGS: MP100 TEKLA STRUCTURES

DWG. ISSUE			REVISIONS	
DATE	PURPOSE	NO.	DATE	DESCRIPTION
03/14/2016	FOR APP	A		

Per AISC Steel Construction Manual 13th Edition 16.3.3 Commentary:  
 While it is the Fabricator's responsibility to report any discrepancies that are discovered in the Contract Documents, it is not the Fabricator's responsibility to discover discrepancies, including those that are associated with the coordination of the various design disciplines. The quality of the Contract Documents is the responsibility of the entities that produce those documents.

