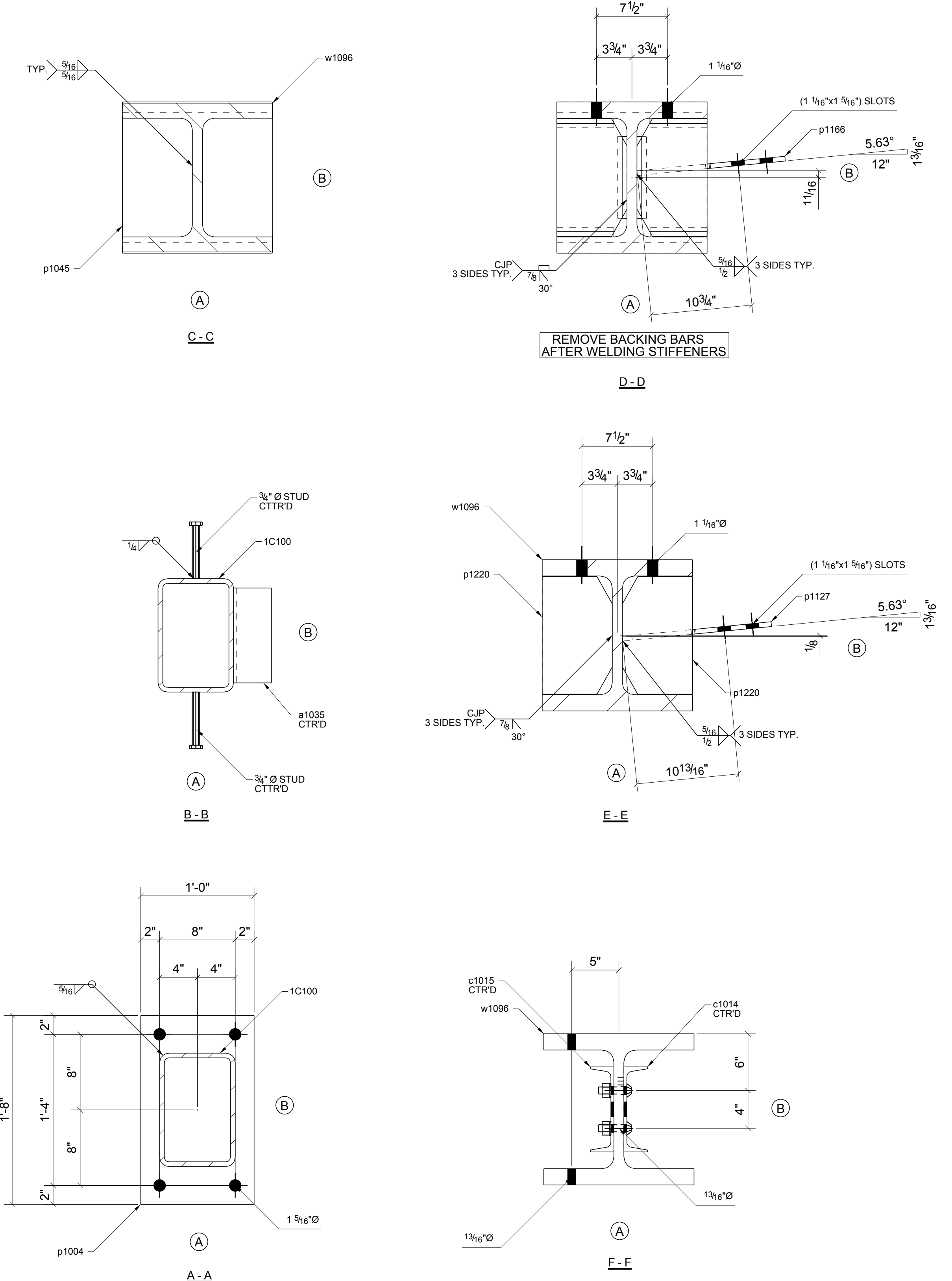
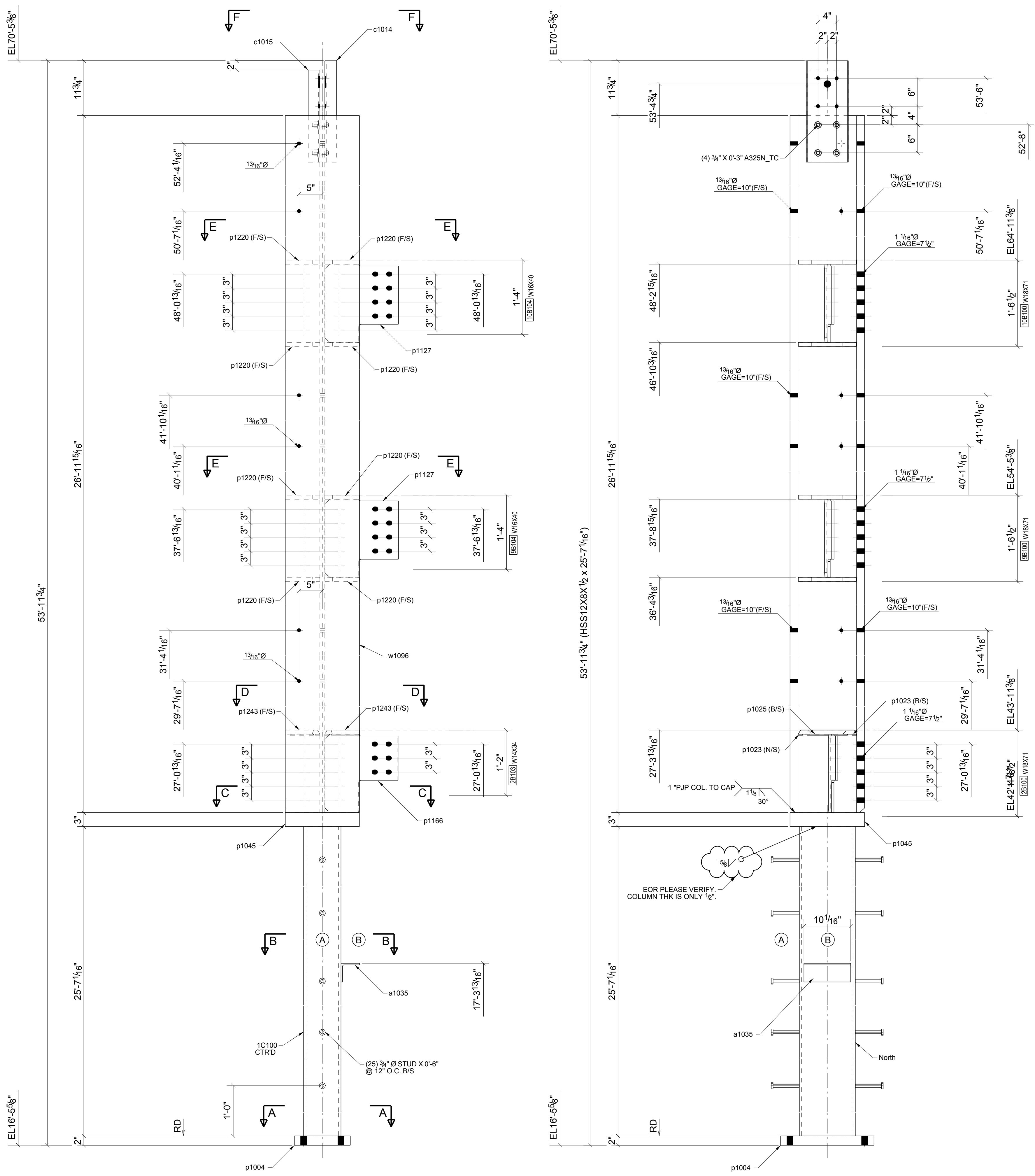


BILL OF MATERIAL									
Qty	EA	Part	Description	Length	Weight	Remarks	Adv	Steel	Grade
1	1	1C100	COLUMN	25'-7 1/16"	1498	S2 NO PAINT	C1	A500-GR B	
1	1	a1035	L4X4X5/16	0'-10 1/16"	7		a1035	A36	
1	1	c1014	C9X15	1'-9 3/4"	27	NO PAINT	c1014	A36	
1	1	c1015	C9X15	1'-7 3/4"	25	NO PAINT	c1015	A36	
1	1	p1004	PL27X12"	1'-8"	136		p1004	A36	
4	4	p1023	PL14X1"	0'-6 1/16"	2	NO PAINT	p1023	A36	
2	2	p1025	PL14X1"	0'-8 1/16"	1	NO PAINT	p1025	A36	
1	1	p1045	PL37X15 7/8"	1'-4"	216		p1045	A36	
2	2	p1127	PL12X15 13/16"	1'-4 3/4"	65		p1127	A36	
1	1	p1166	PL12X15 3/4"	1'-4 13/16"	29		p1166	A36	
8	8	p1220	PL7/8X7 7/16"	1'-0 7/16"	174		p1220	A572-50	
2	2	p1243	PL7/8X7 7/16"	1'-0 7/16"	41		p1243	A572-50	
1	1	w1096	W14X233	26'-11 15/16"	6293	NO PAINT	w1096	A992	
4	4		3/4" A325N_TC BOLT	0'-3"	3	Workshop			
50	50		STUD 3/4" DIA	0'-6"	43				
4	4		3/4" A325N_TC BOLT	0'-3"	3	Site			



NO PAINT
ONE - COLUMN - 1C100

REF DWGS: MP101 MP102 MP103 TEKLA STRUCTURES

DWG. ISSUE			REVISIONS		
DATE	PURPOSE	NO.	DATE	DESCRIPTION	
03/28/2016	FOR APP	A			



Per AISC Steel Construction Manual 13th Edition 16.3.3 Commentary. While it is the fabricator's responsibility to report any discrepancies that are discovered in the Contract Documents, it is not the fabricator's responsibility to discover discrepancies, including those that are associated with the coordination of the various design disciplines. The quality of the Contract Documents is the responsibility of the entities that produce those documents.

