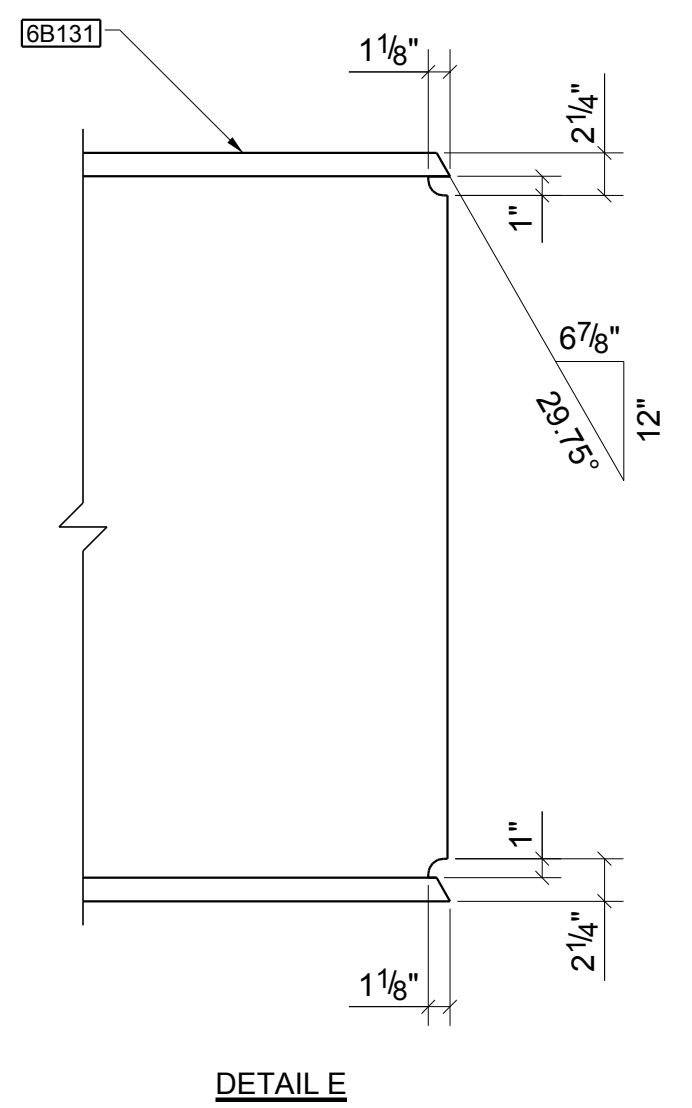
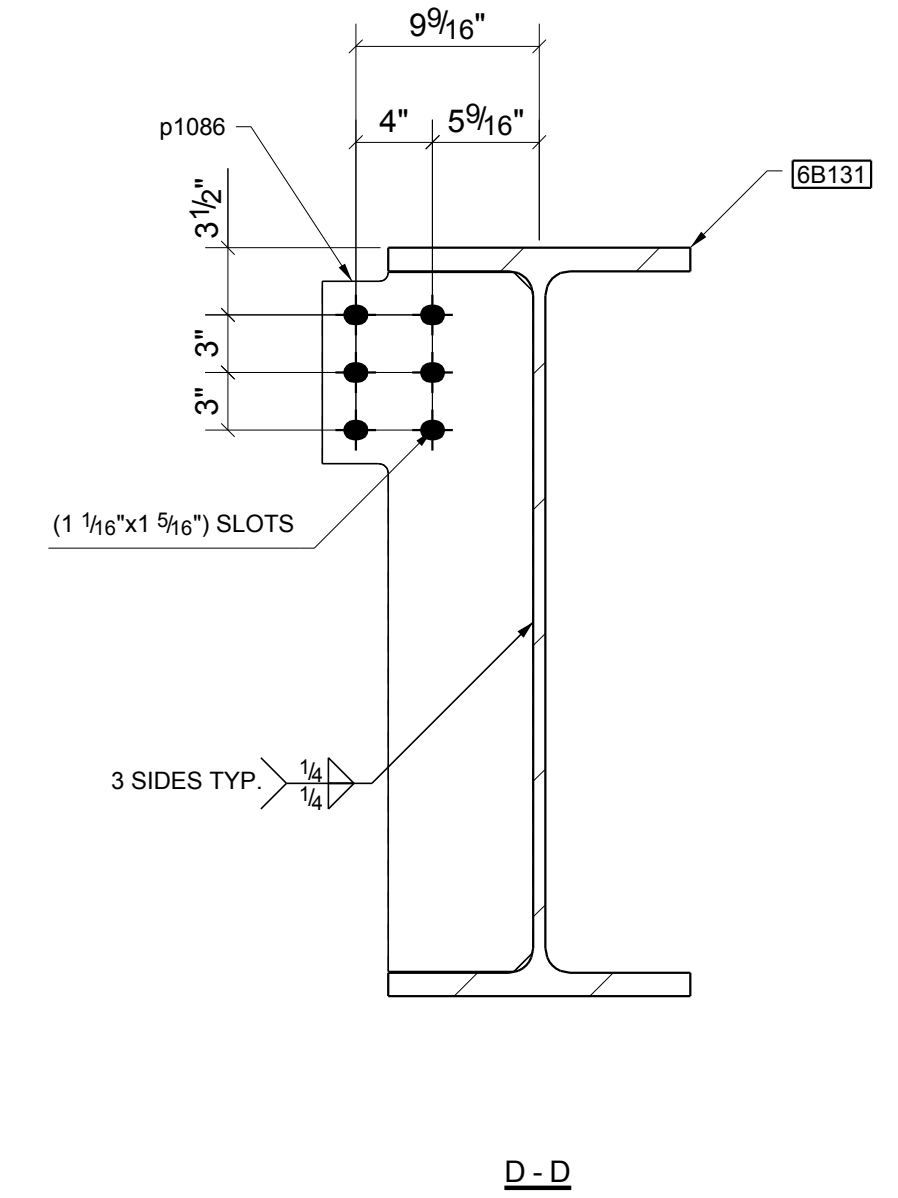
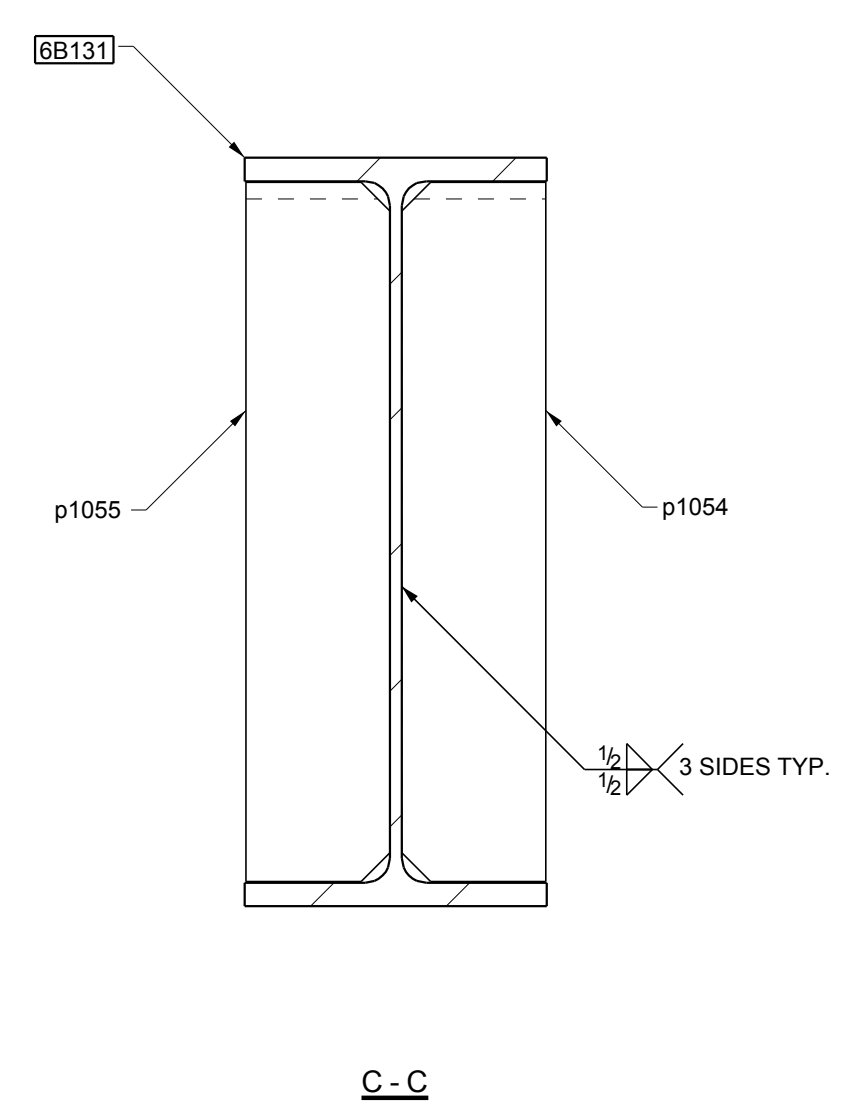
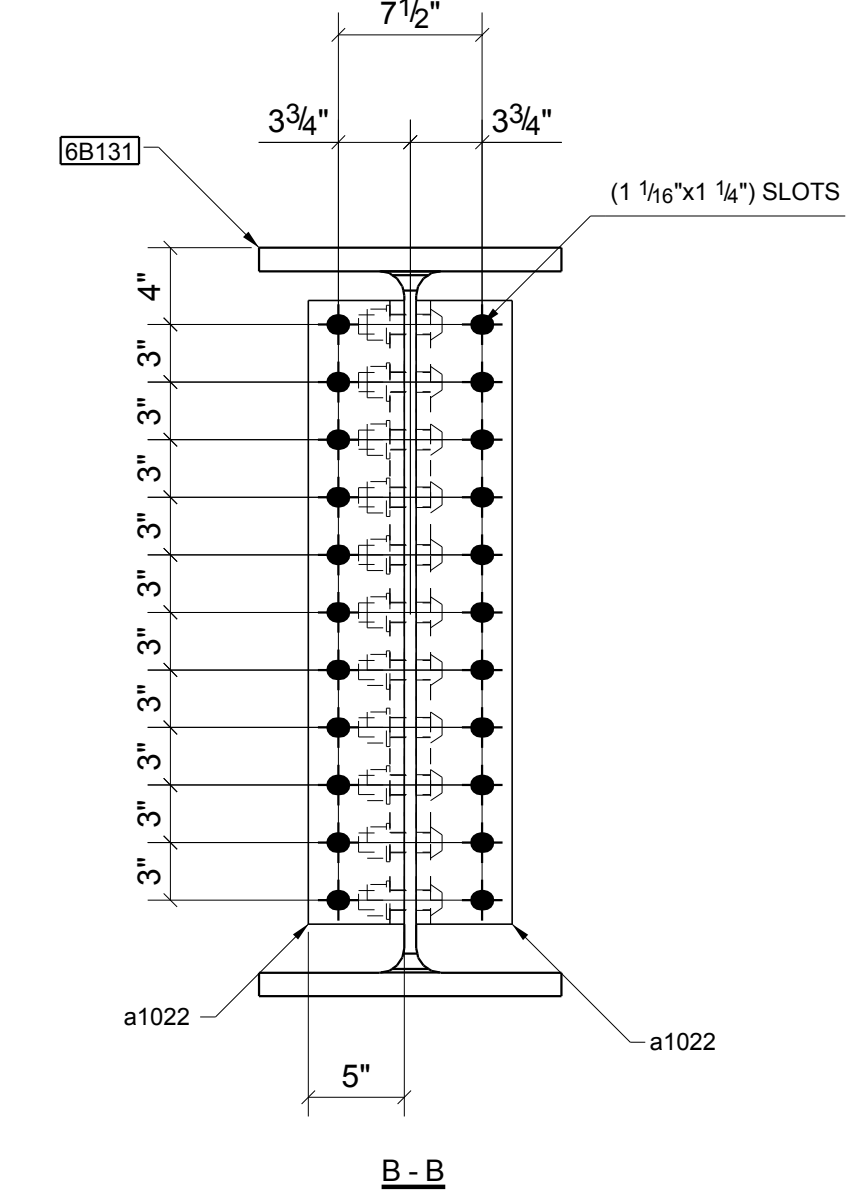
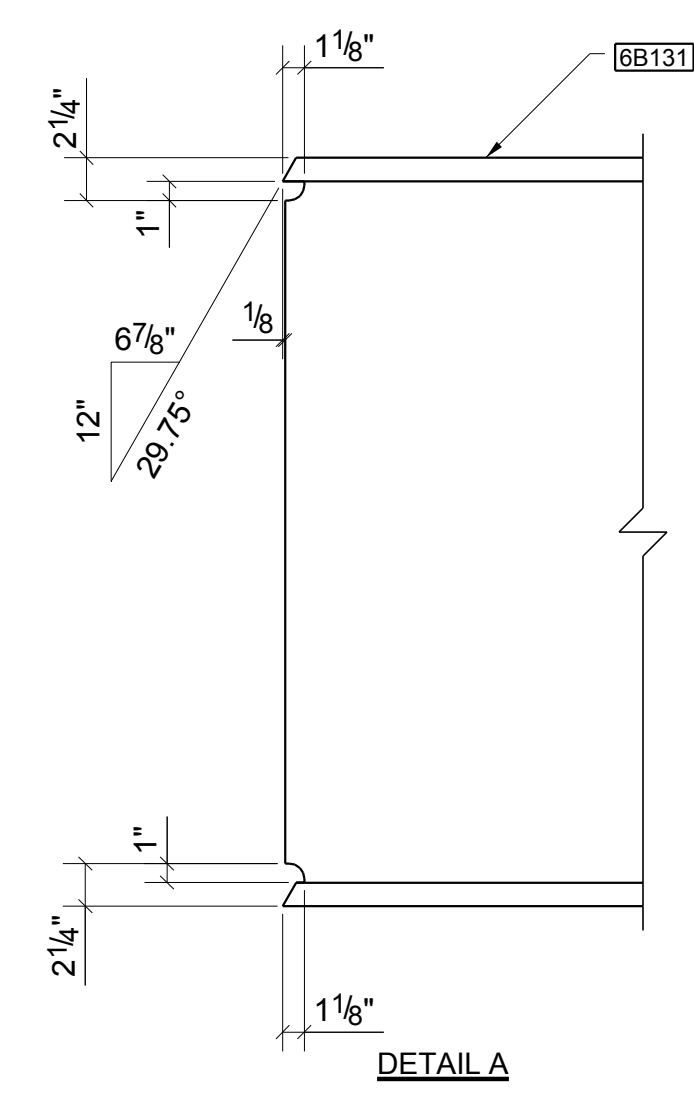
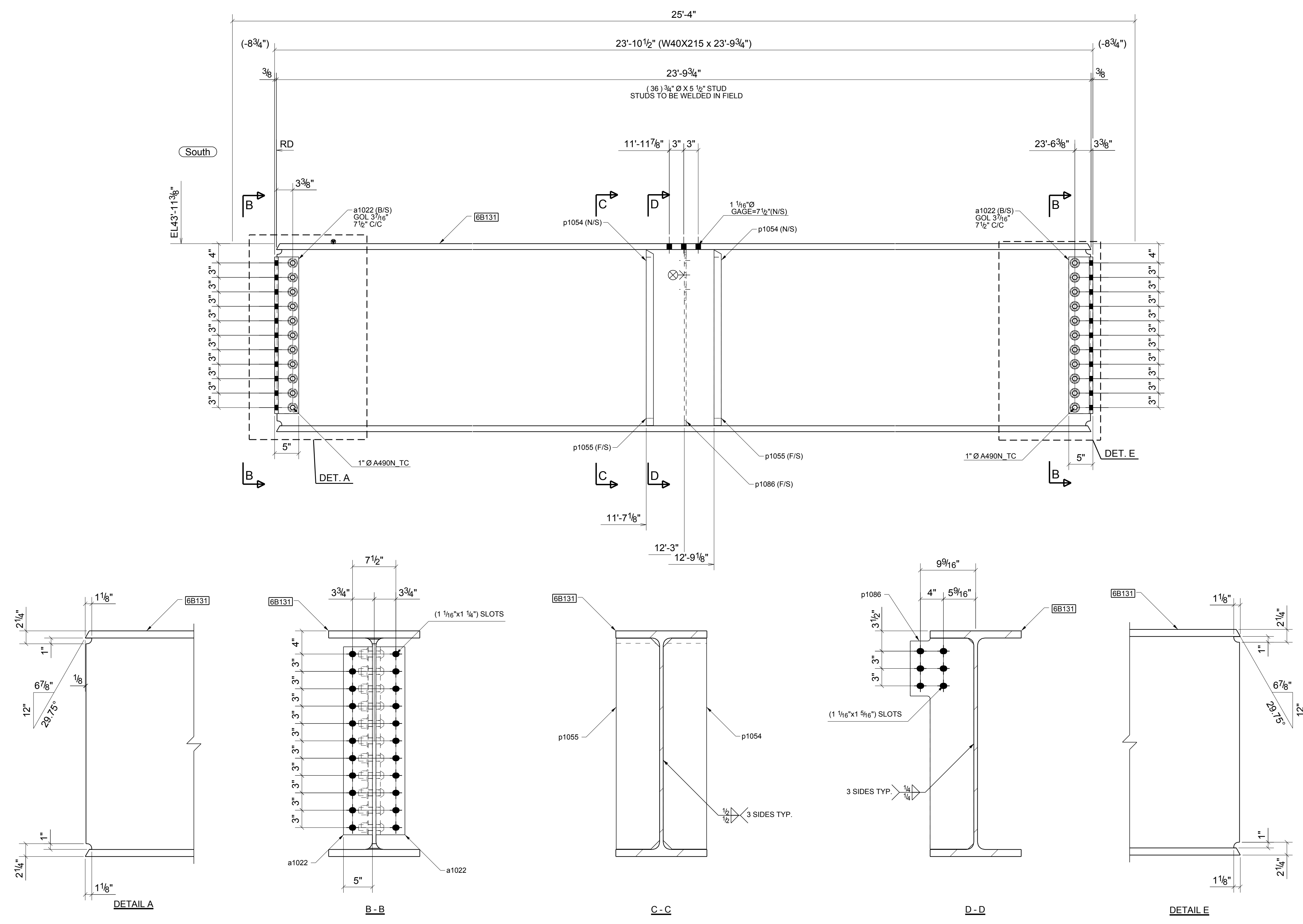


DERRICK
6

BILL OF MATERIAL						
Qty	Piece	Description	Length	Weight	Remarks	Adv
Est	Mark			Total		Mill #
1	6B131	BEAM				
1	1	W40X215	23'-9 3/4"	5146	502 NO PAINT	B502 A992
4	a1022	L5X5X3/4	2'-8 1/2"	257		a1022 A36
2	p1054	PL 1 1/2"X7 1/2"	3'-0 7/16"	228		p1054 A36
2	p1055	PL 1 1/2"X7 1/2"	3'-0 7/16"	228		p1055 A36
1	p1086	PL 3/8"X11"	3'-0 7/16"	33		p1086 A36
22	22	1"Ø A490N_TC BOLT	0'-3 3/4"	35	Workshop	
44	44	1"Ø A490N_TC BOLT	0'-4 3/4"		Site	



NO PAINT
ONE - BEAM - 6B131

REF DWGS: MP102 TEKLA STRUCTURES

Per AISC Steel Construction Manual 13th Edition 16.3.3 Commentary:
While it is the Fabricator's responsibility to report any discrepancies that are discovered in the Contract Documents, it is not the Fabricator's responsibility to discover discrepancies, including those that are associated with the coordination of the various design disciplines. The quality of the Contract Documents is the responsibility of the entities that produce those documents.



DWG. ISSUE			REVISIONS	
DATE	PURPOSE	NO.	DATE	DESCRIPTION
03/28/2016	FOR APP	A		
		△		
		△		
		△		
		△		
		△		
		△		

