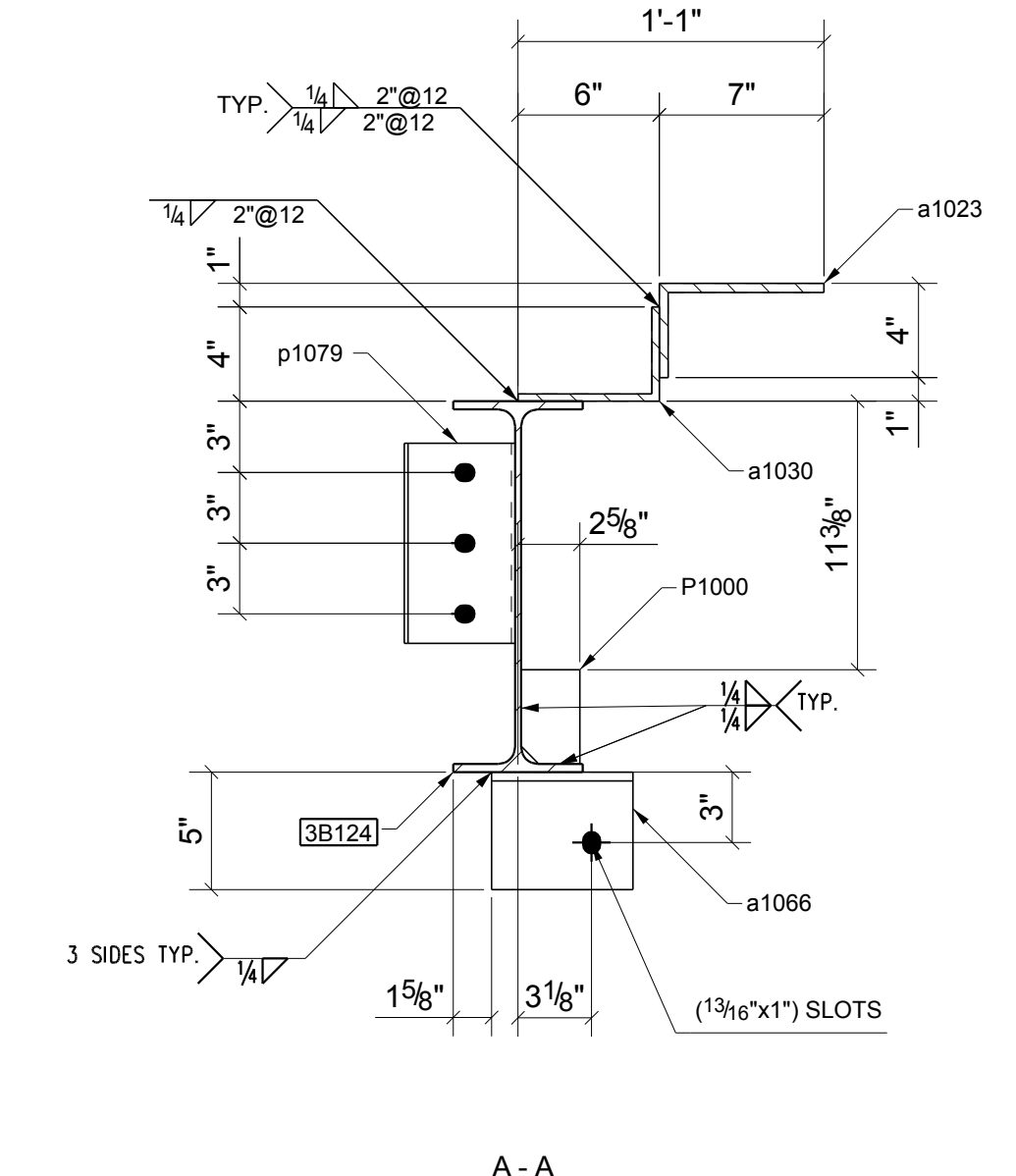
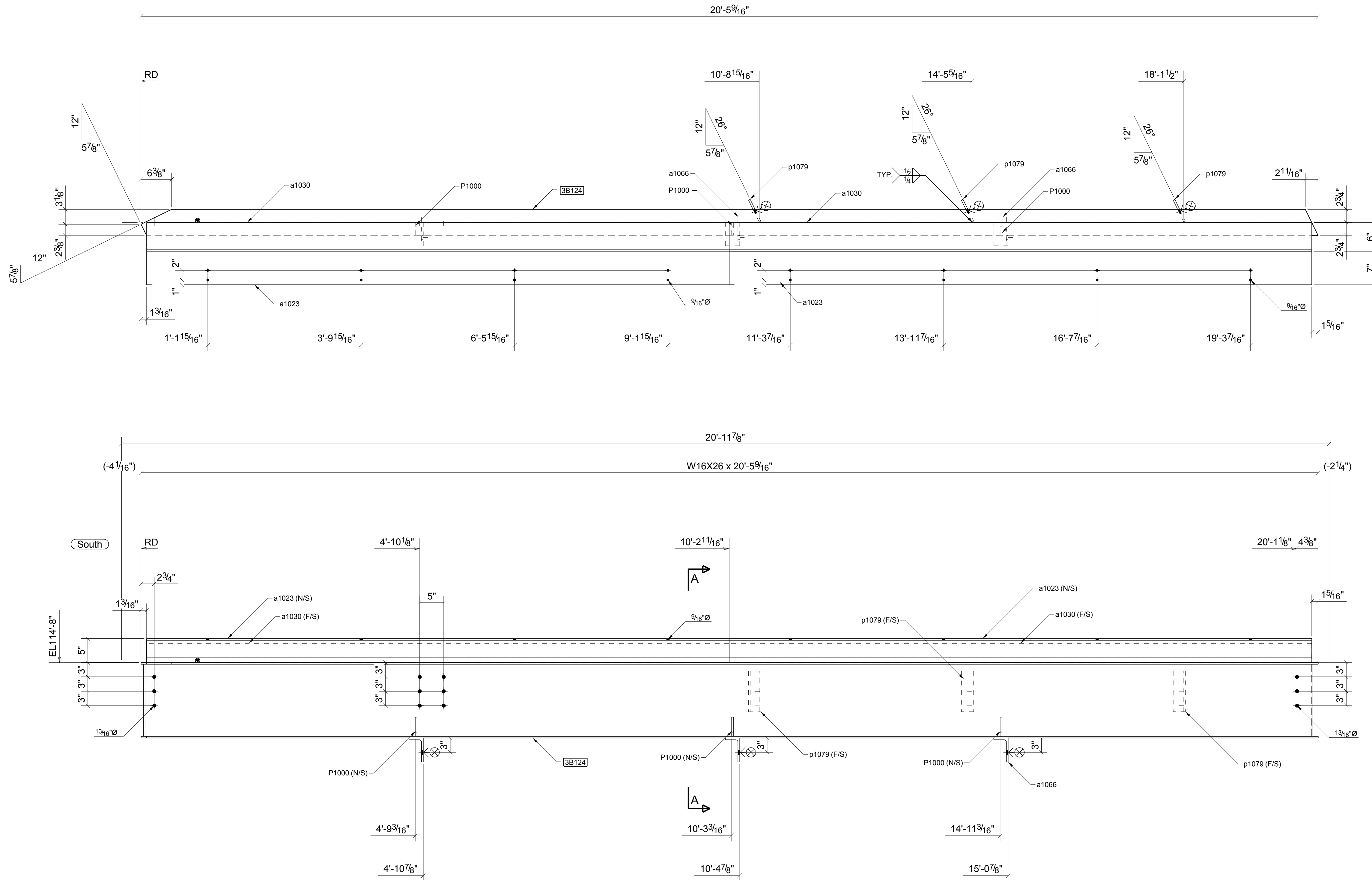


BILL OF MATERIAL

Qty Ea	Qty Tot	Piece Mark	Description	Length	Weight Total	Remarks	Adv Mill #	Steel Grade
1	1	3B124	BEAM					
1	1		W16X26	20'-5 9/16"	535	BEV-2 STD PRIMER	w283	A992
3	3	P1000	PL 3/8"X2 1/2"	0'-4"	3	STD PRIMER		A36
2	2	a1023	L7X4X3/8	10'-1 1/2"	276	STD PRIMER		A36
2	2	a1030	L6X4X5/16	10'-1 1/2"	209	STD PRIMER		A36
3	3	a1066	L5X3X3/8	0'-6"	15	STD PRIMER		A36
3	3	p1079	PL 3/8"X5 1/16"	0'-8 1/2"	14	STD PRIMER		A36
3	3		3/4"Ø A325N_TC BOLT	0'-1 3/4"		Site		
3	3		3/4"Ø A325N BOLT	0'-1 3/4"		Site		
3	3		3/4"Ø A307 BOLT	0'-2"		Site		



**STD PRIMER
ONE - BEAM - 3B124**

REF DWGS: MP100 TEKLA STRUCTURES

DWG. ISSUE			REVISIONS	
DATE	PURPOSE	NO.	DATE	DESCRIPTION
03/14/2016	FOR APP	A		
		△		
		△		
		△		
		△		
		△		
		△		

Per AISC Steel Construction Manual 13th Edition 16.3.3 Commentary:
While it is the Fabricator's responsibility to report any discrepancies that are discovered in the Contract Documents, it is not the Fabricator's responsibility to discover discrepancies, including those that are associated with the coordination of the various design disciplines. The quality of the Contract Documents is the responsibility of the entities that produce those documents.

