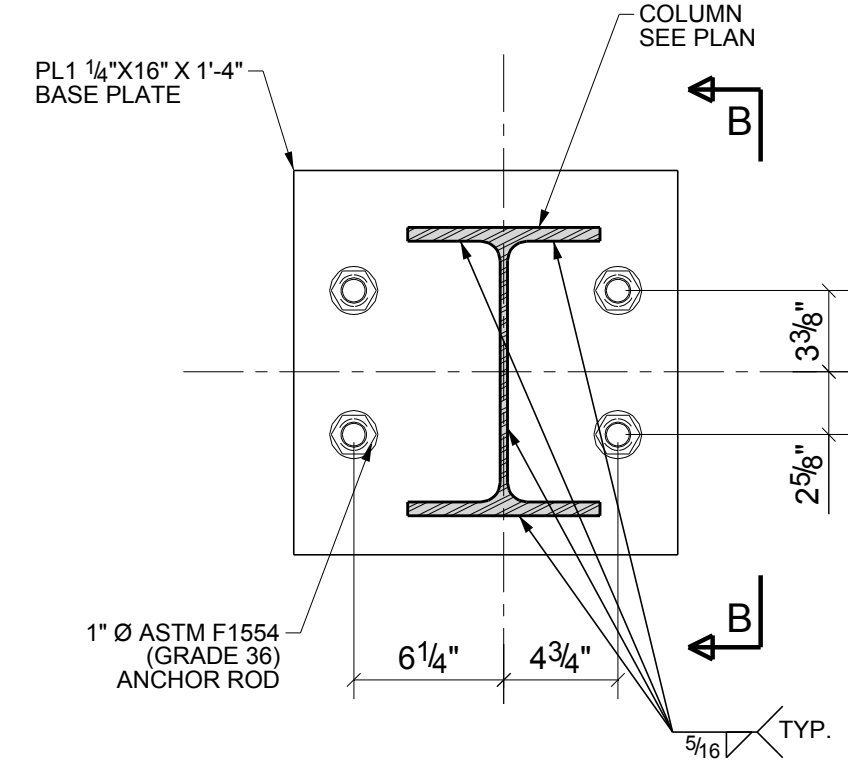
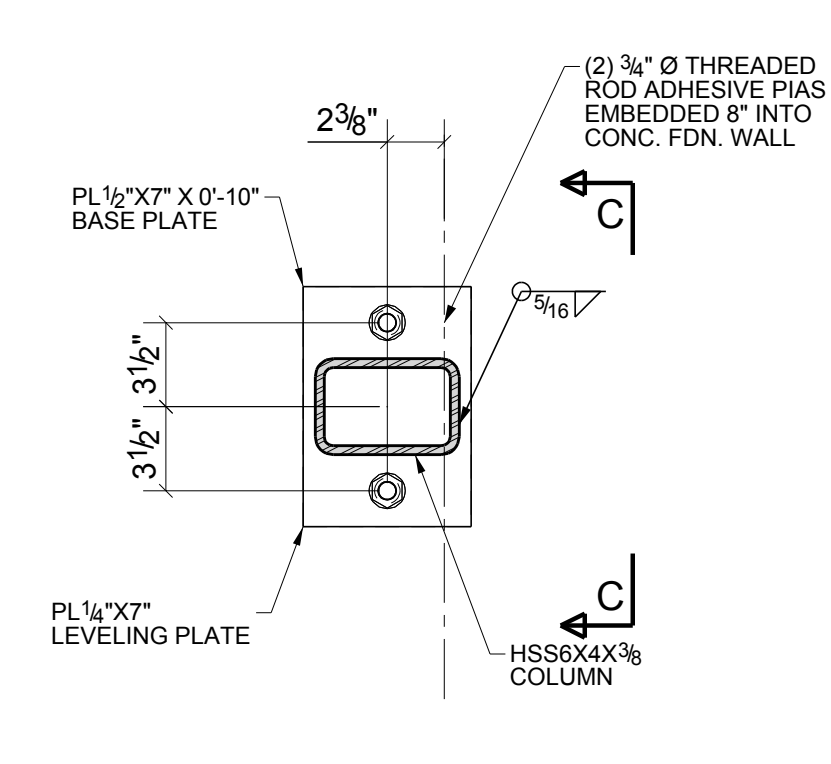


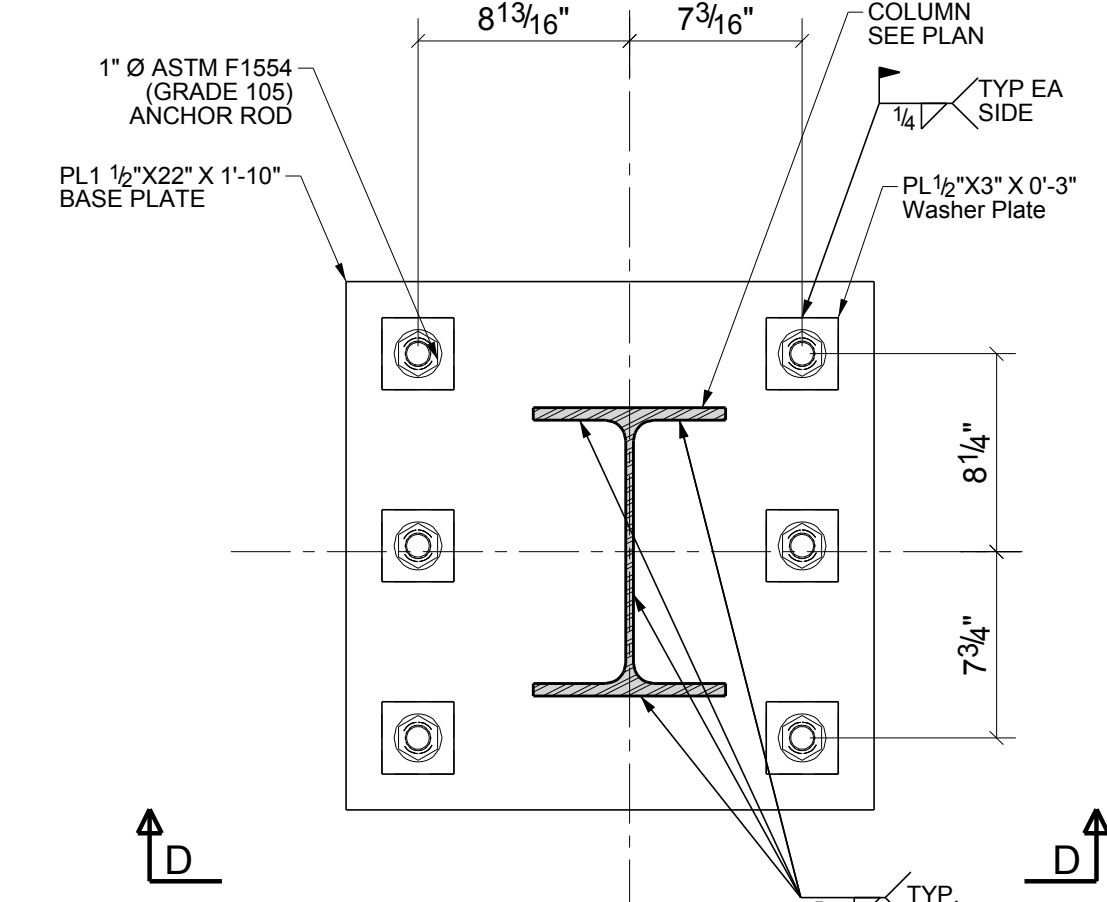
1 ANCHOR BOLT DETAIL - AR 100
SCALE: 1:8



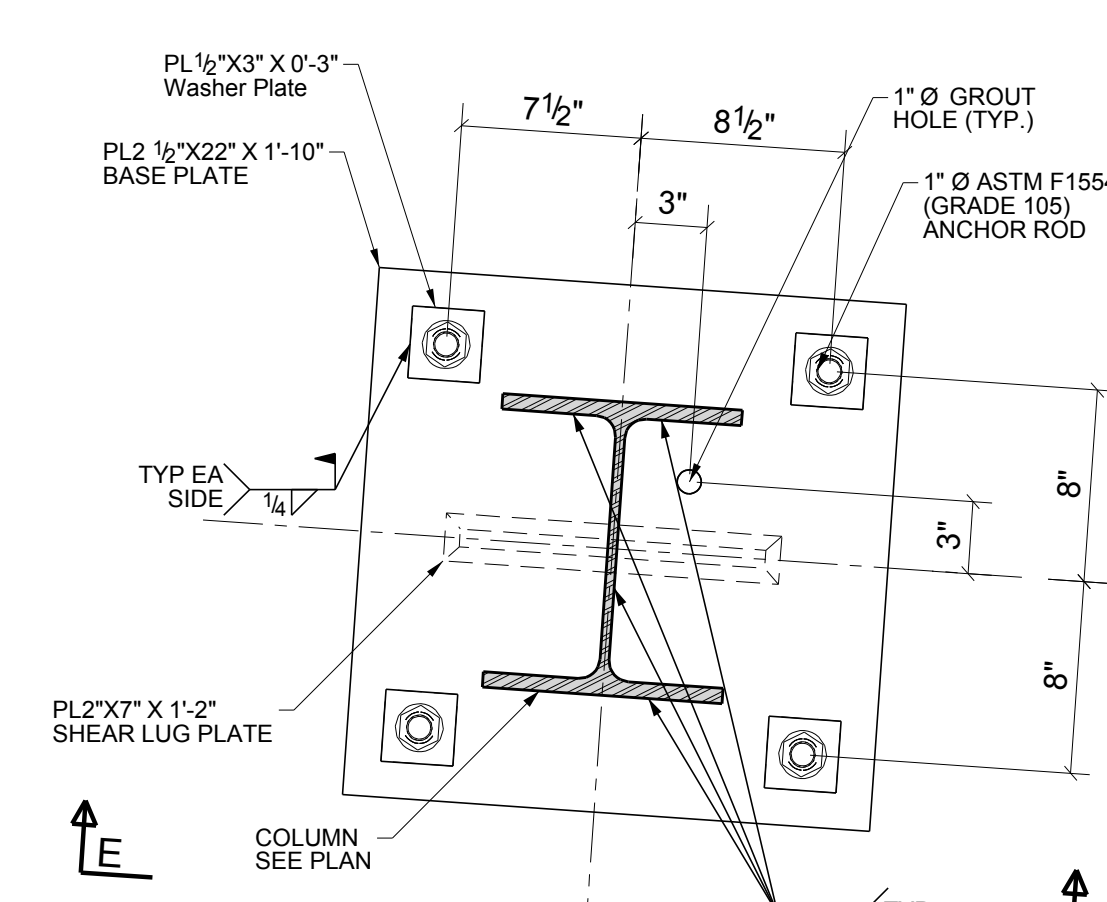
2 ANCHOR BOLT DETAIL - AR 101
SCALE: 1:8



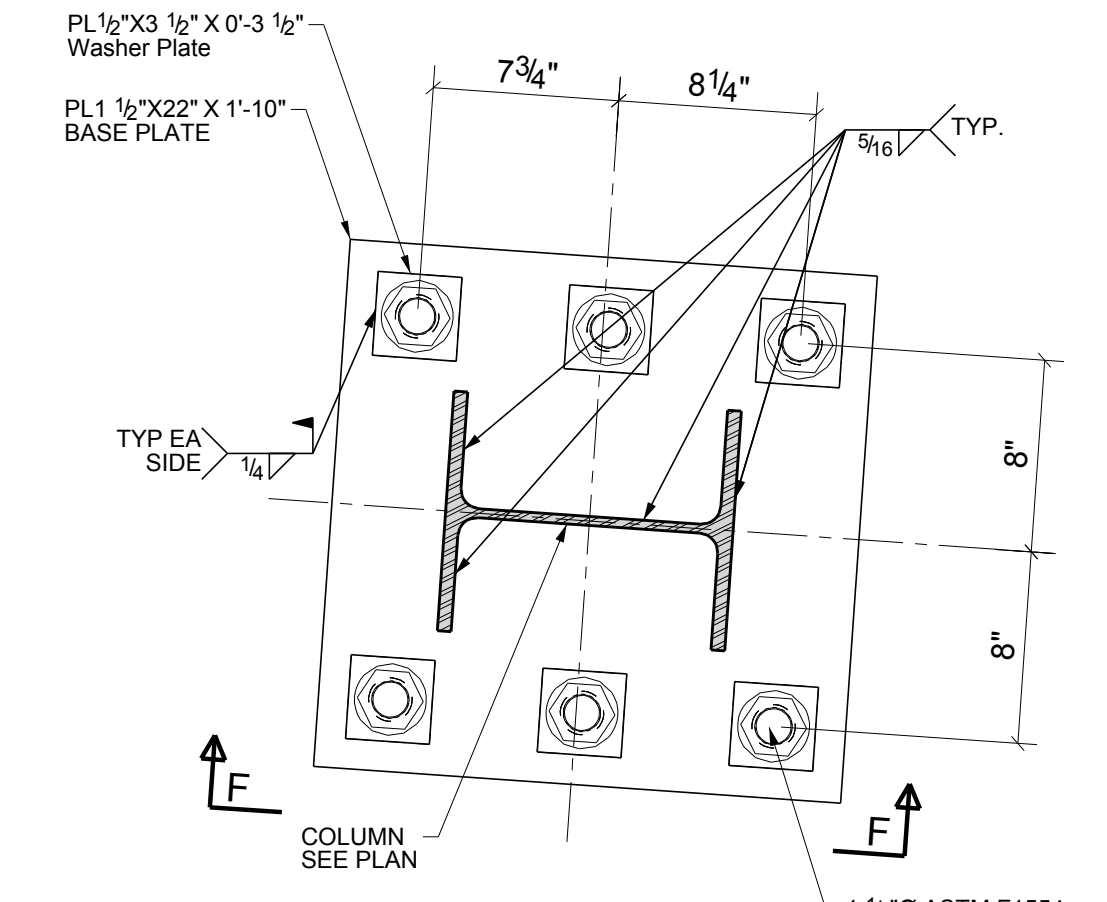
3 ANCHOR BOLT DETAIL - AR 102
SCALE: 1:8



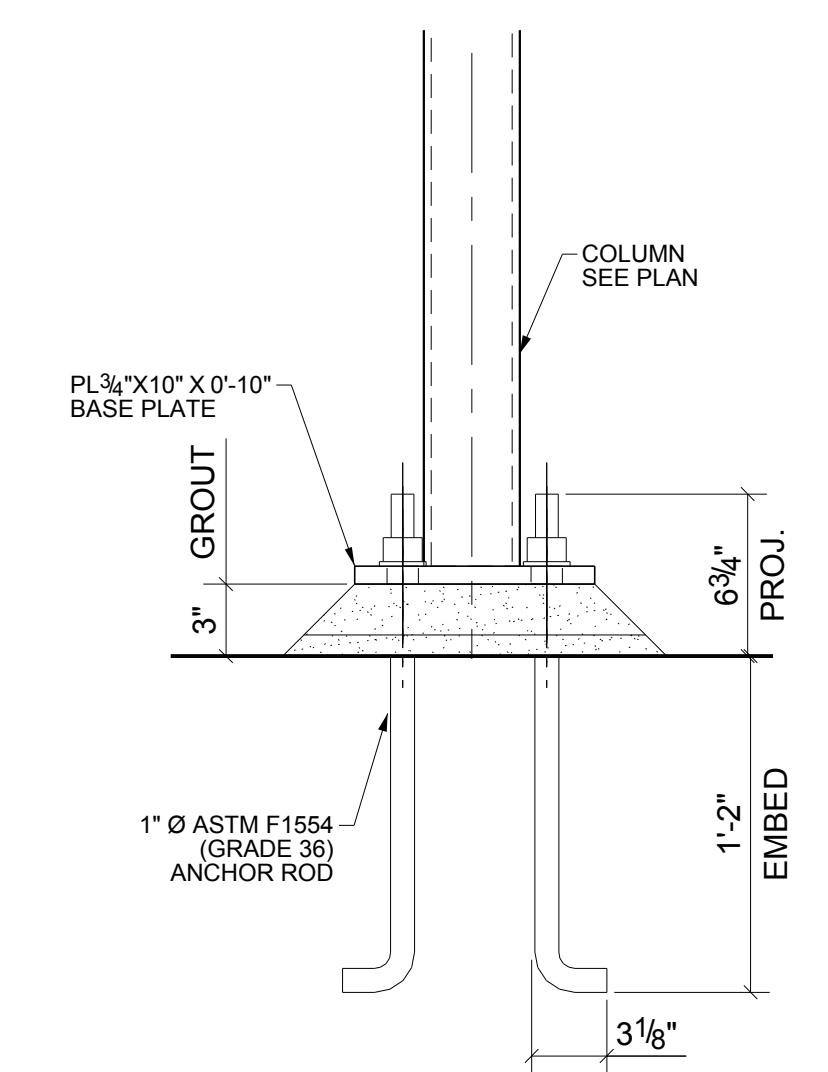
4 ANCHOR BOLT DETAIL - AR 103
SCALE: 1:8



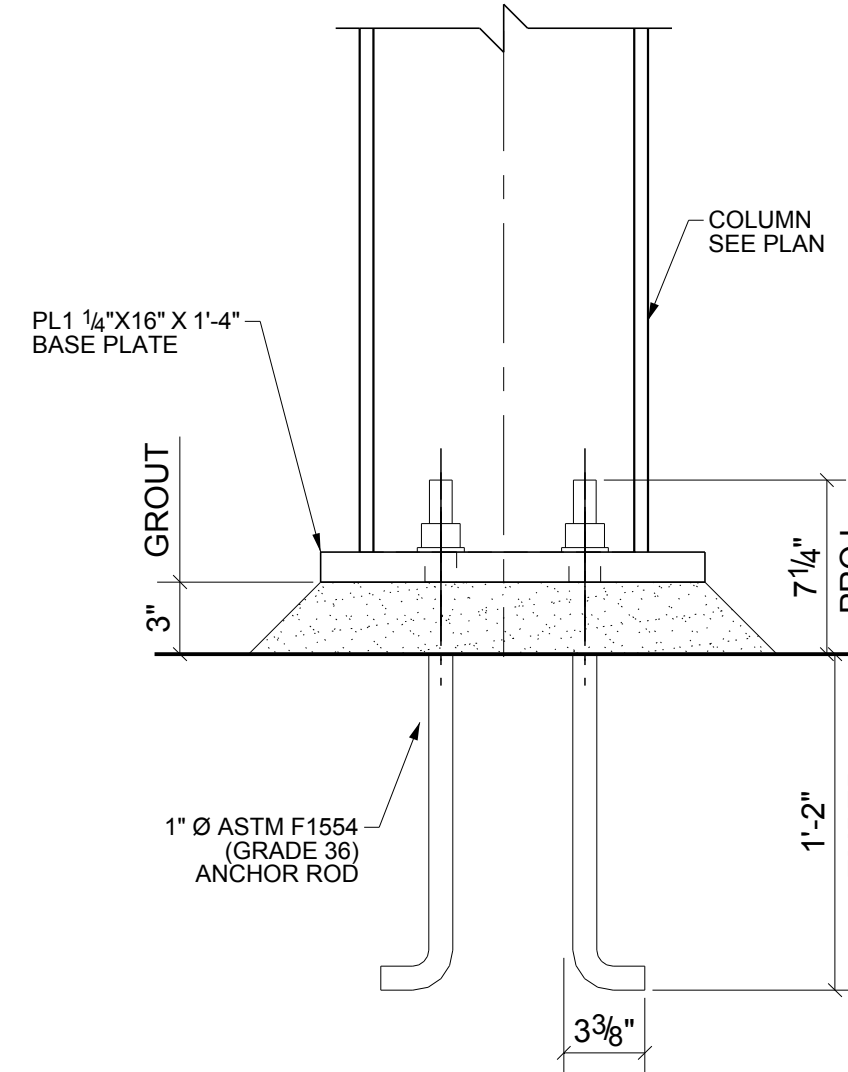
5 ANCHOR BOLT DETAIL - AR 104
SCALE: 1:8



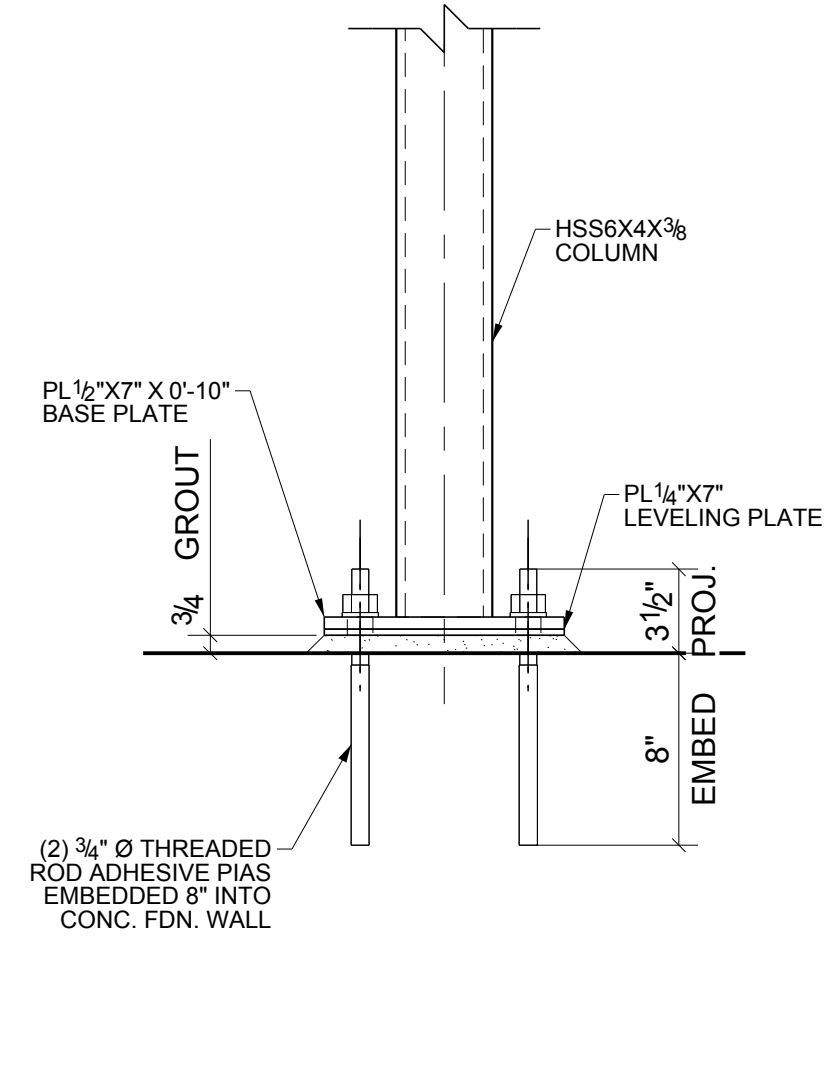
6 ANCHOR BOLT DETAIL - AR 105
SCALE: 1:8



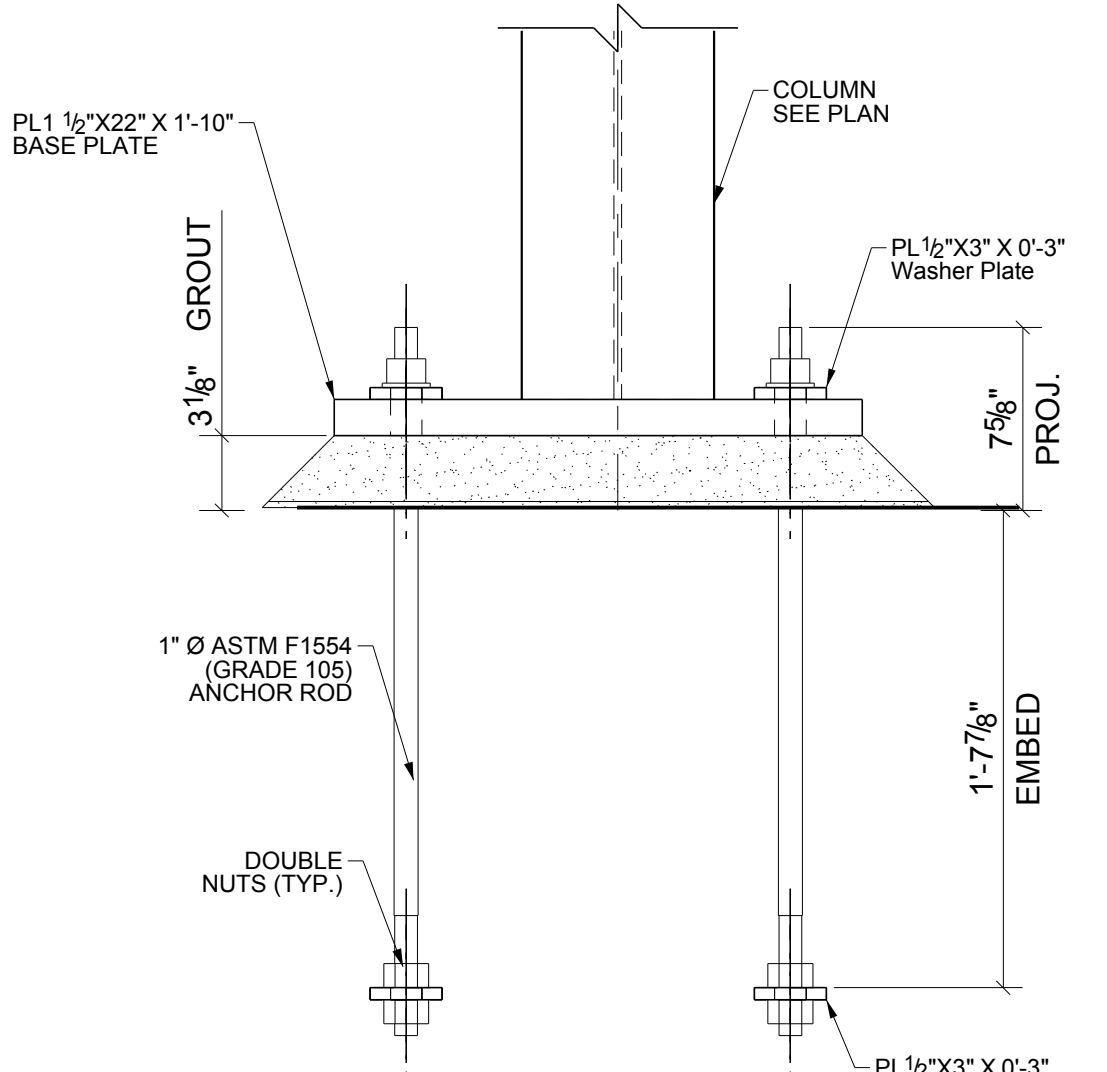
A SECTION
SCALE: 1:8



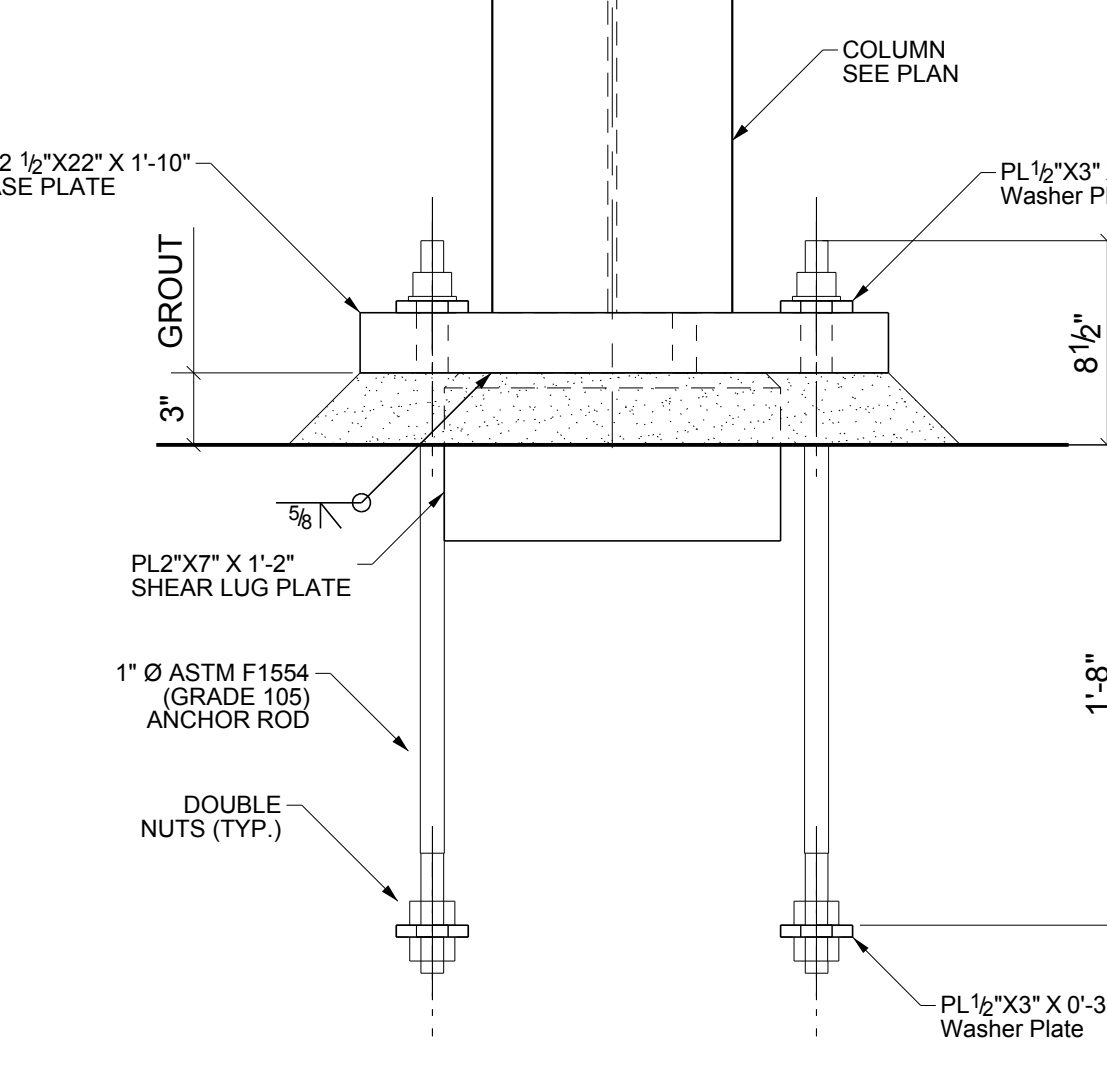
B SECTION
SCALE: 1:8



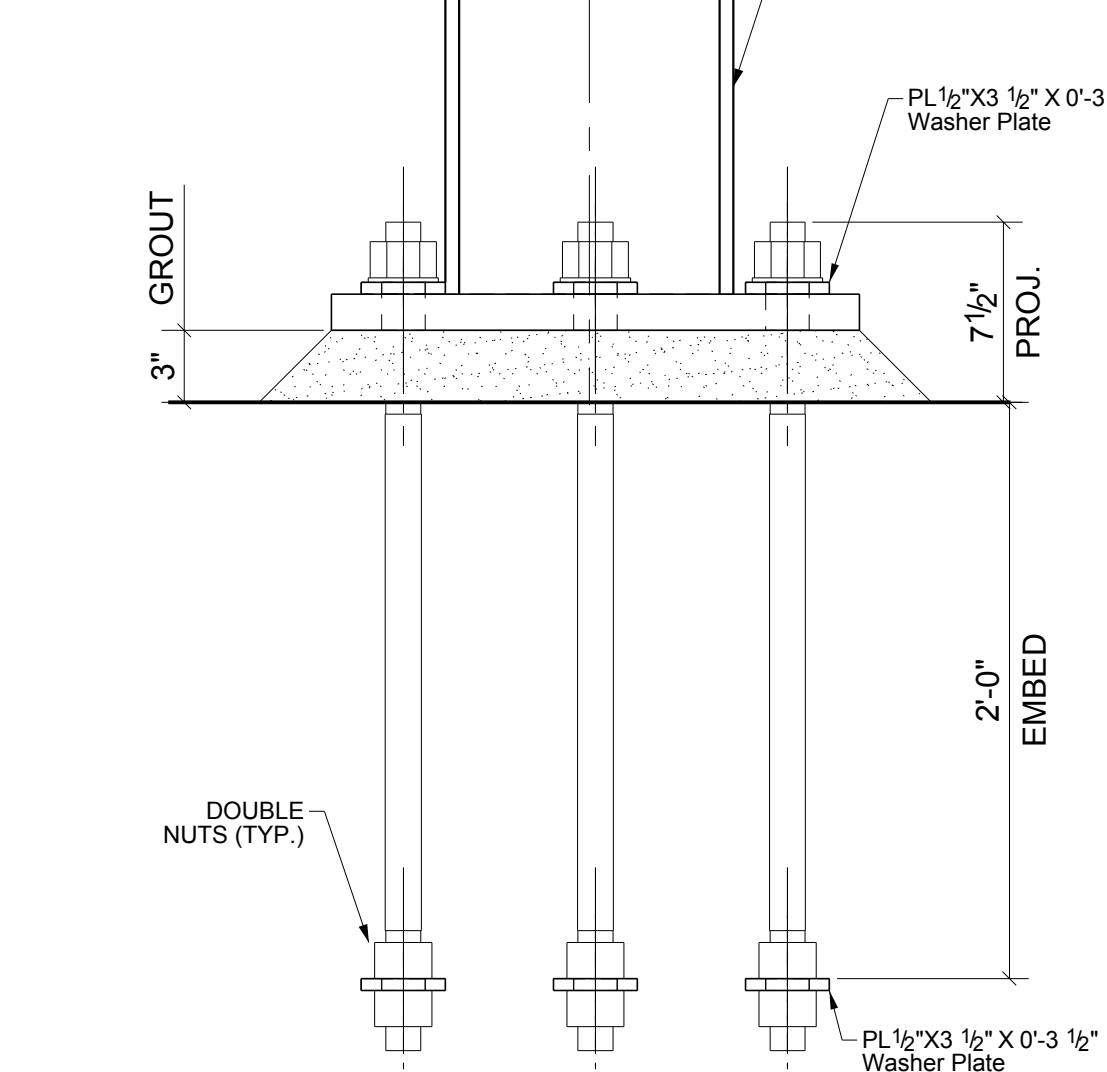
C SECTION
SCALE: 1:8



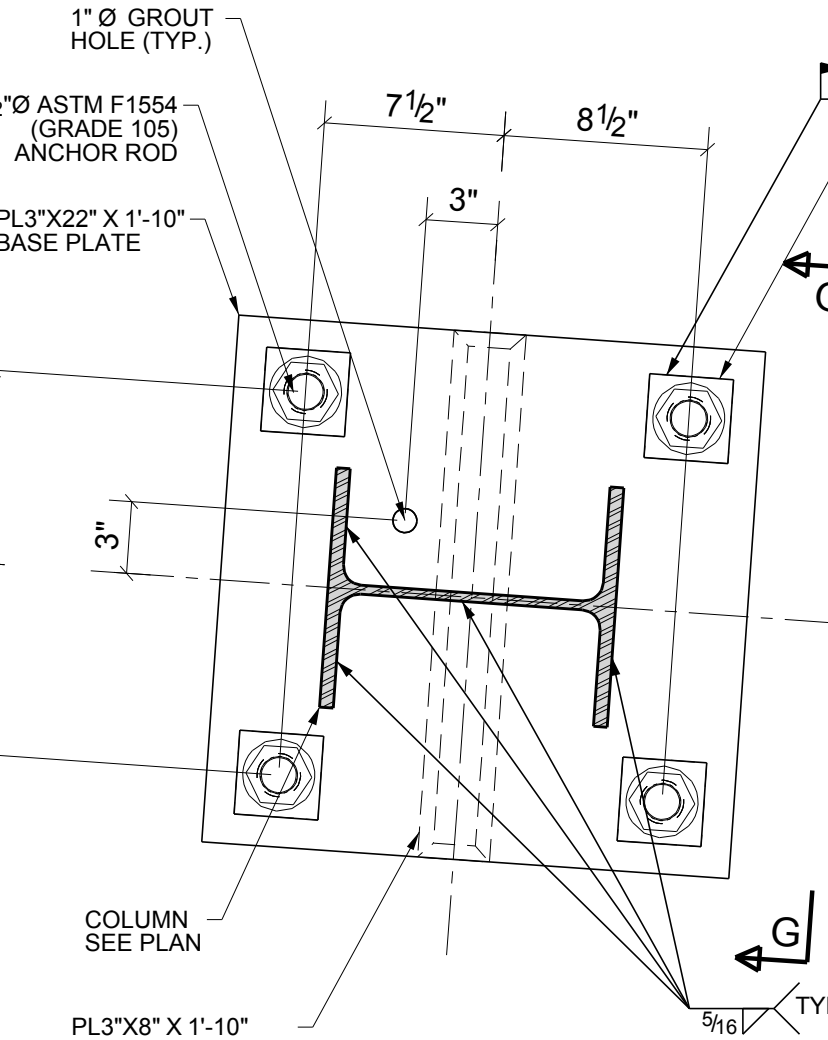
D SECTION
SCALE: 1:8



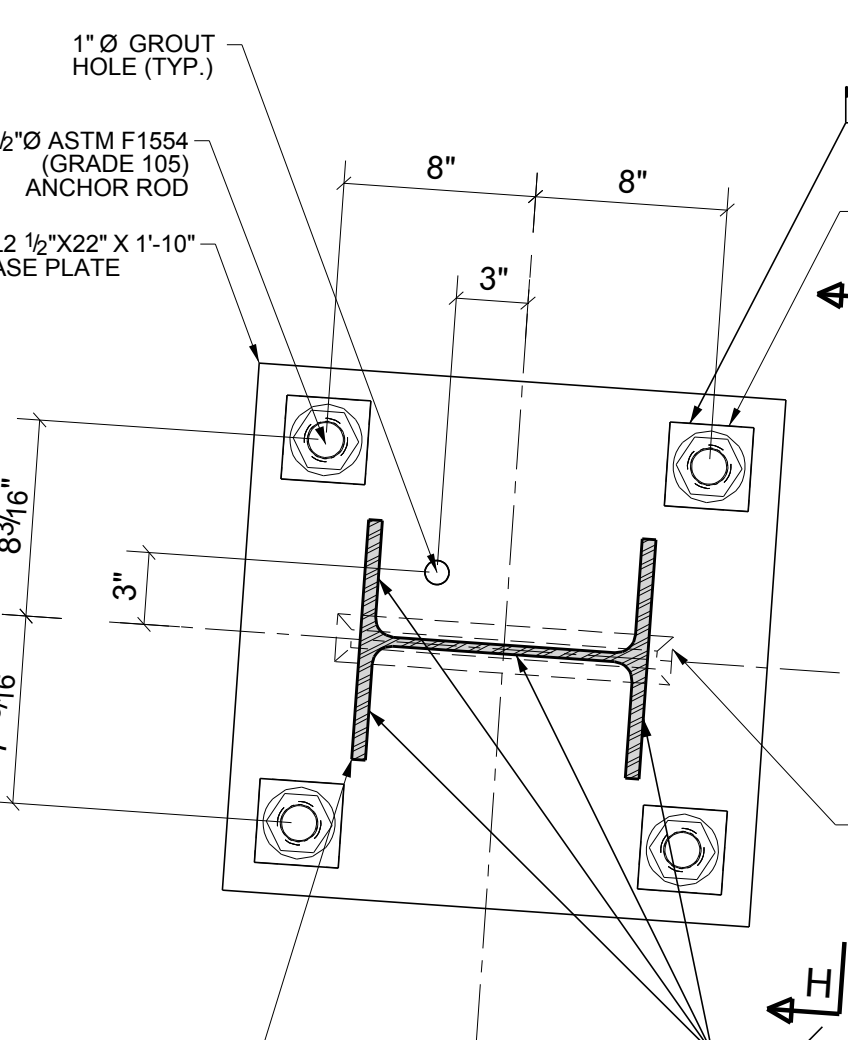
E SECTION
SCALE: 1:8



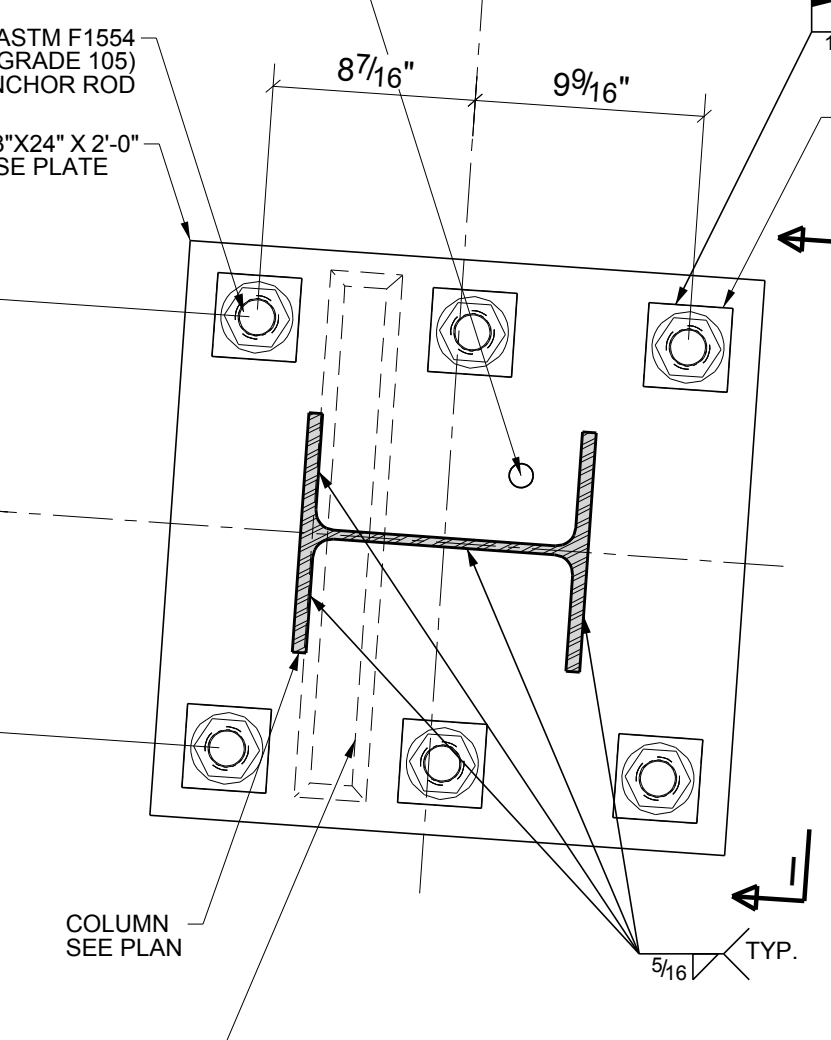
F SECTION
SCALE: 1:8



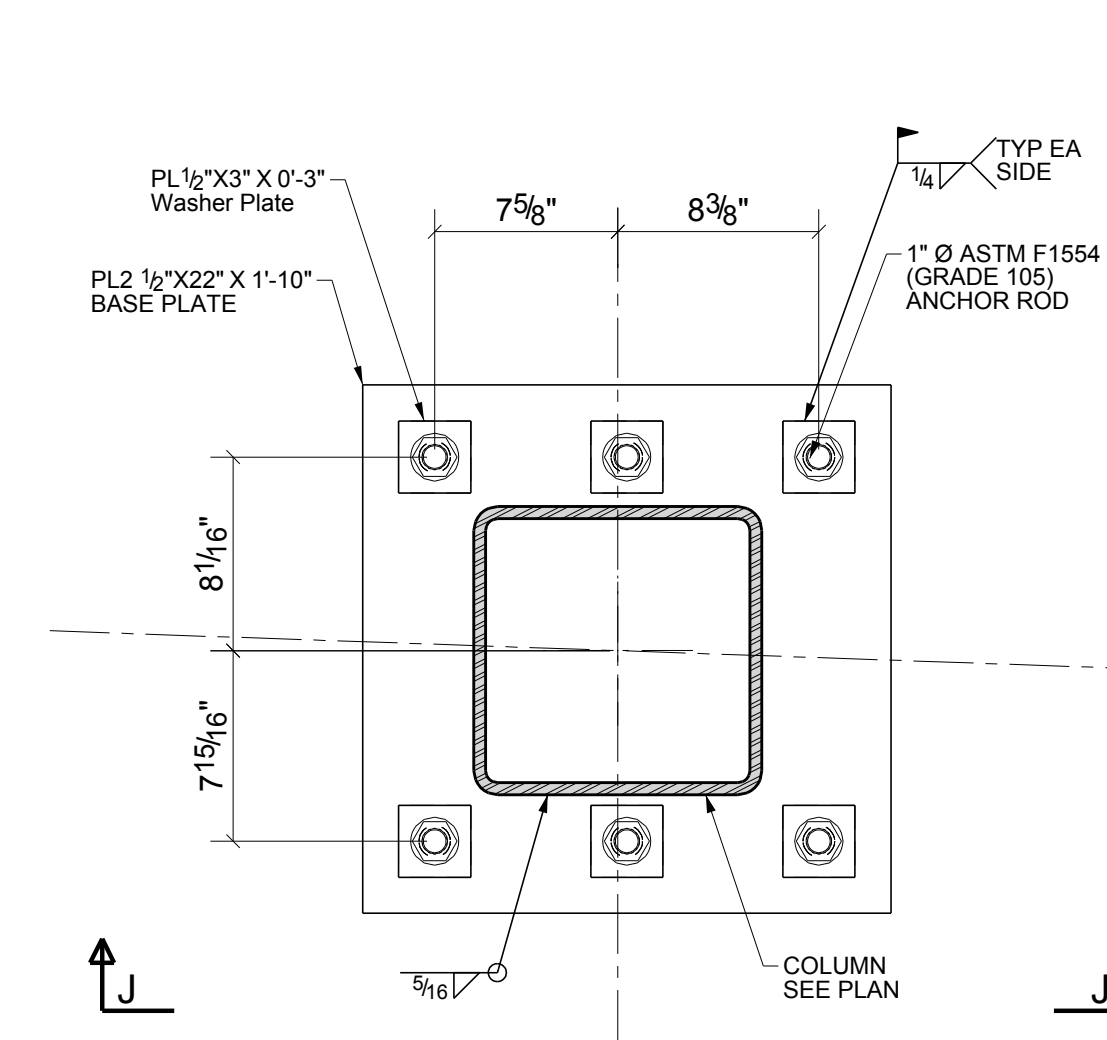
7 ANCHOR BOLT DETAIL - AR 106
SCALE: 1:8



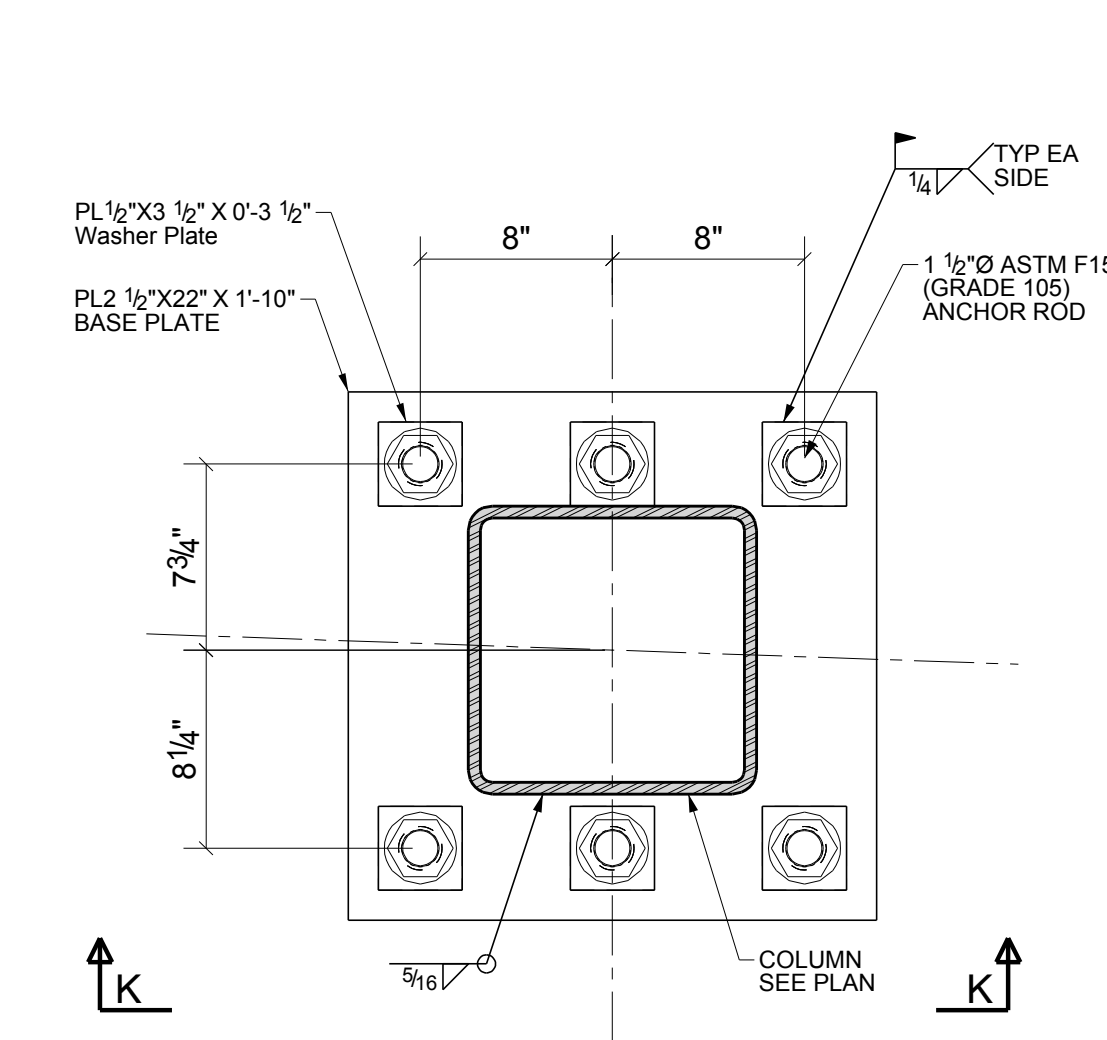
8 ANCHOR BOLT DETAIL - AR 107
SCALE: 1:8



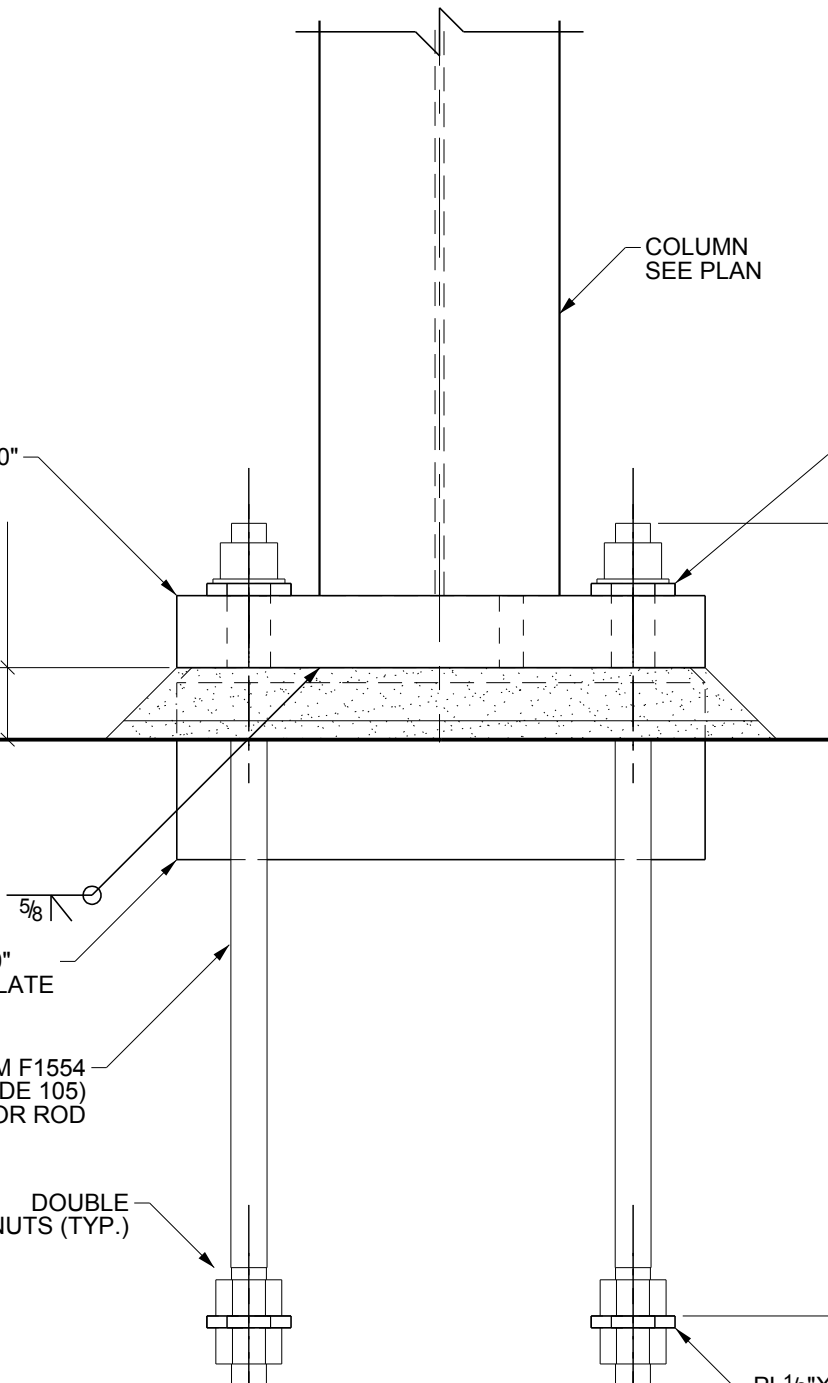
9 ANCHOR BOLT DETAIL - AR 108
SCALE: 1:8



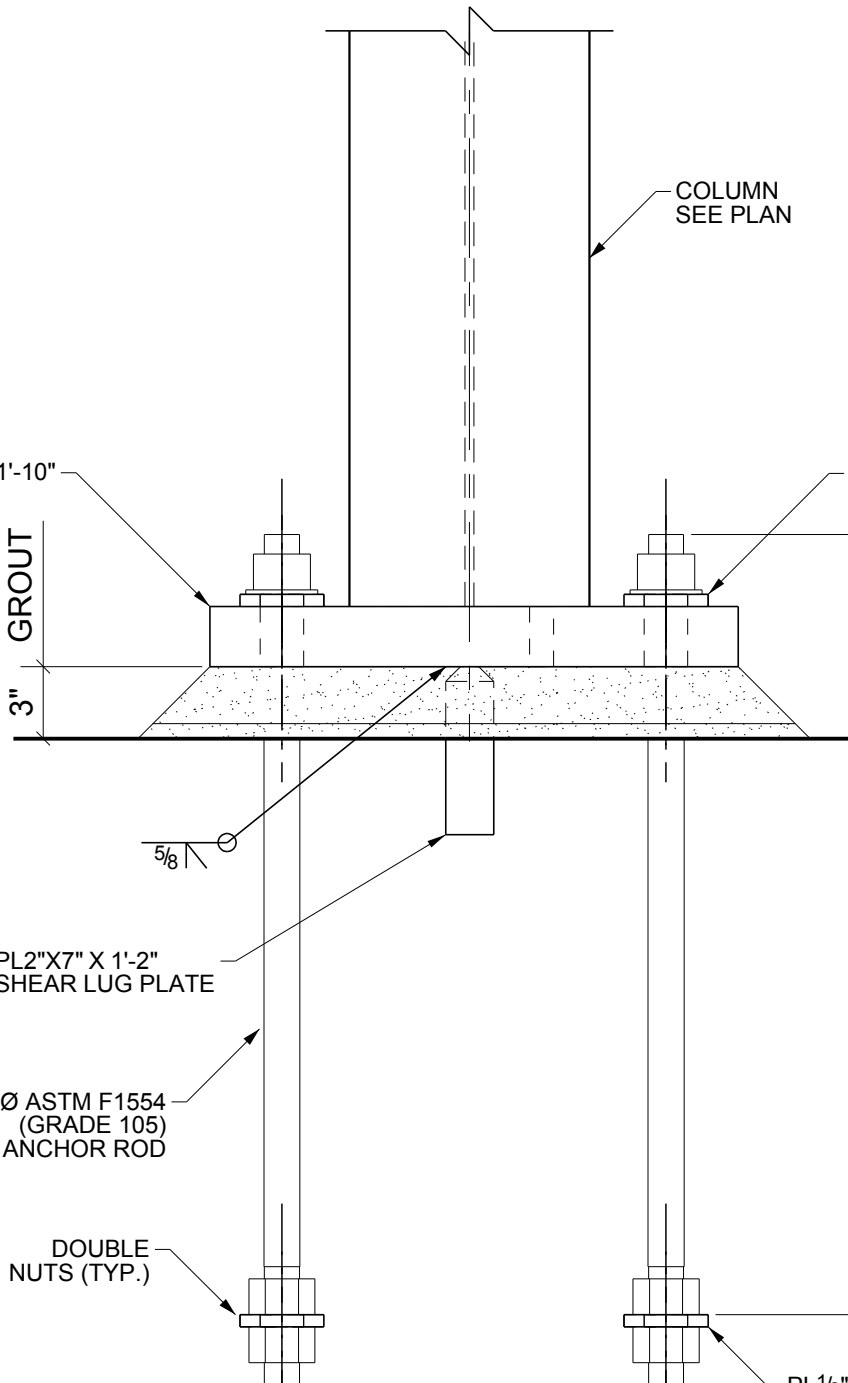
10 ANCHOR BOLT DETAIL - AR 109
SCALE: 1:8



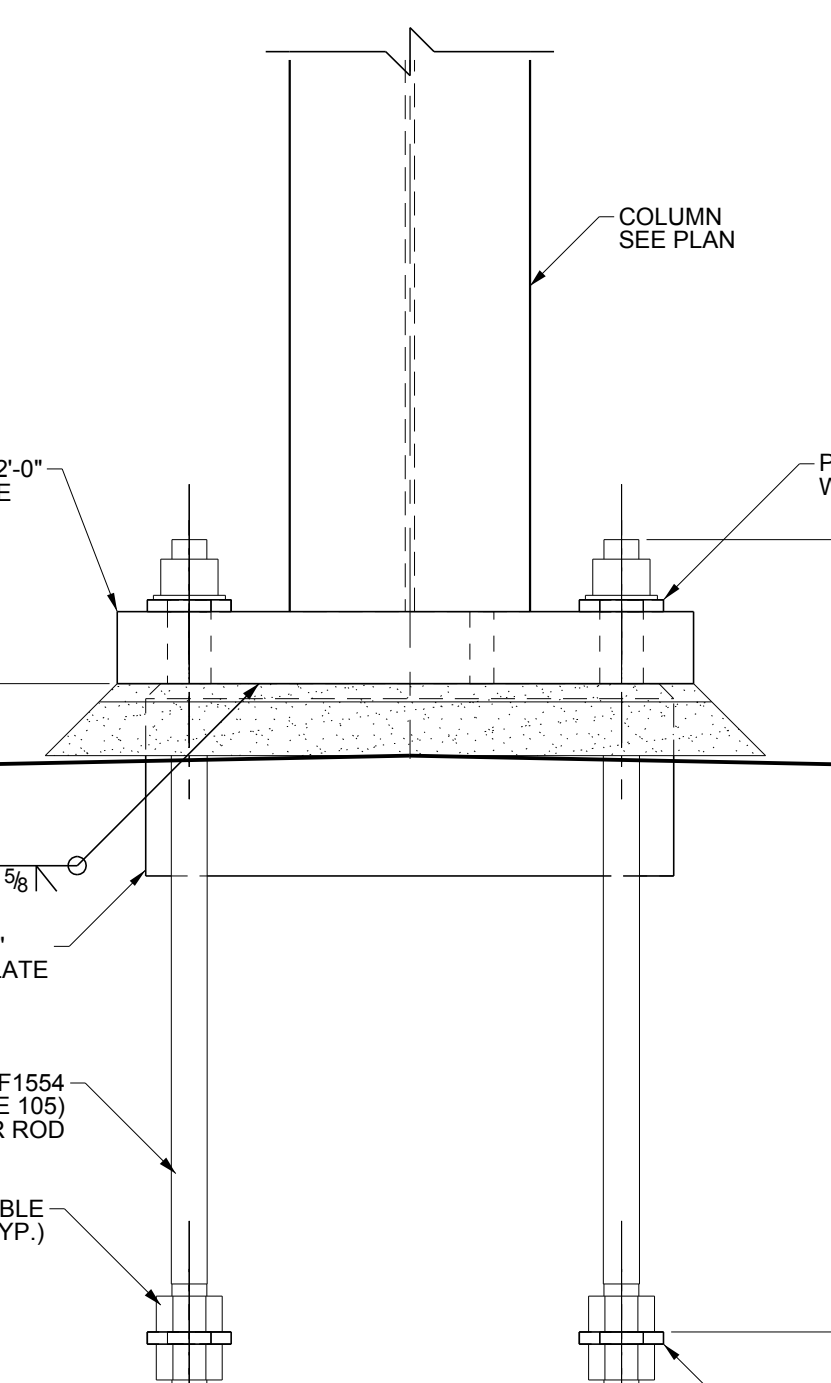
11 ANCHOR BOLT DETAIL - AR 110
SCALE: 1:8



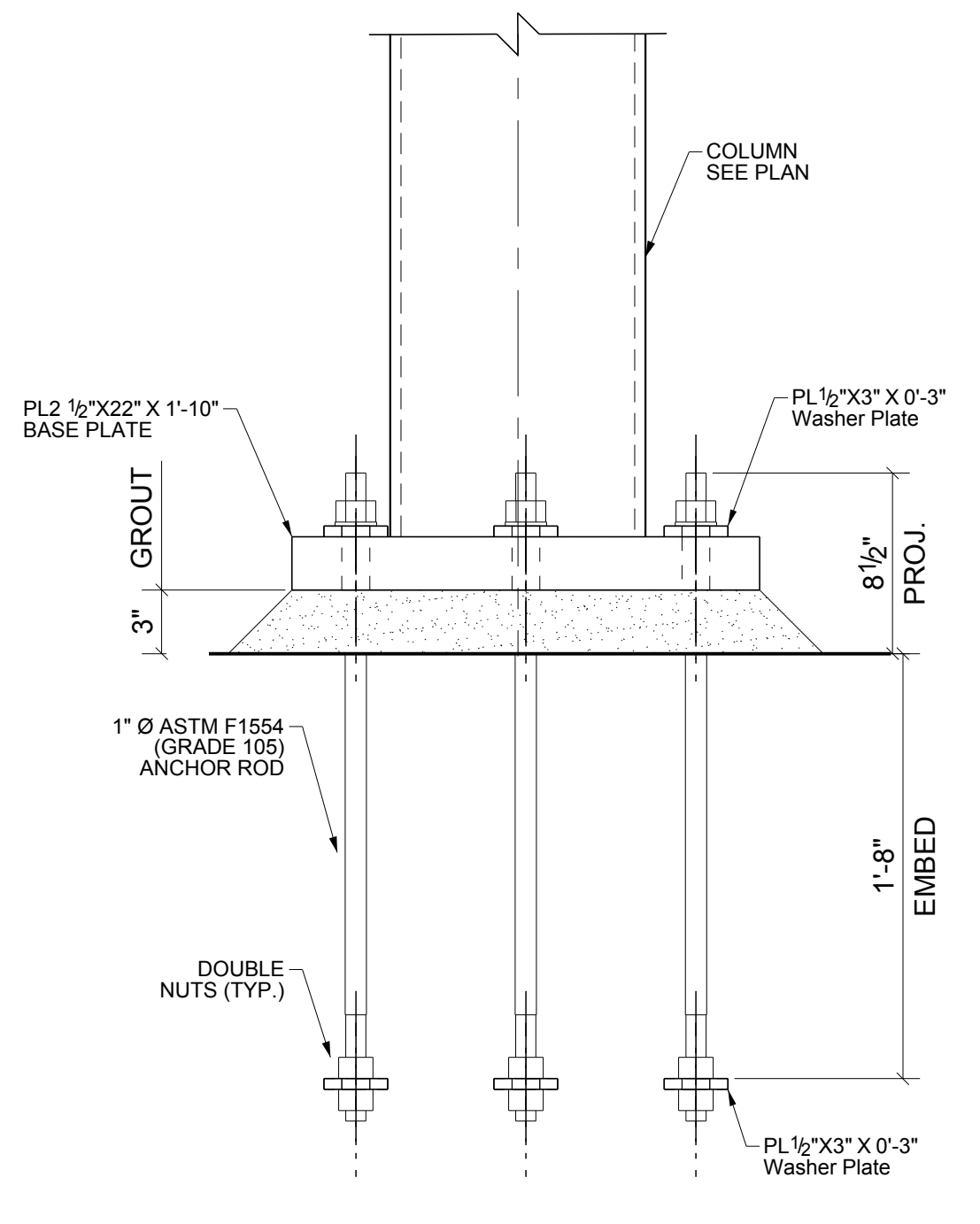
G SECTION
SCALE: 1:8



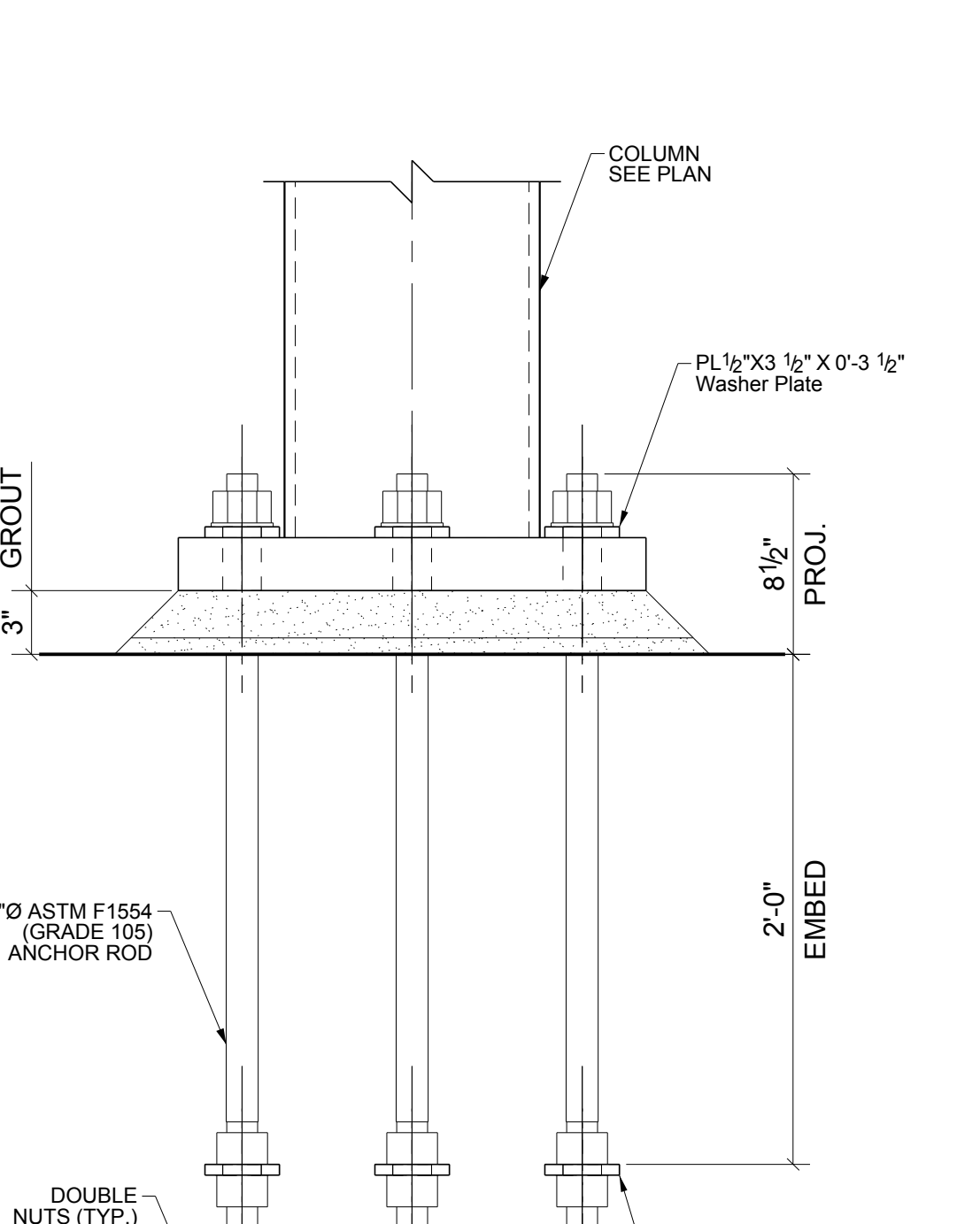
H SECTION
SCALE: 1:8



I SECTION
SCALE: 1:8



J SECTION
SCALE: 1:8



K SECTION
SCALE: 1:8

REF DWGS: S50-01 S50-02 TEKLA STRUCTURES

DWG. DATE	ISSUE PURPOSE	NO.	REVISIONS DATE	DESCRIPTION
12/02/2015	FOR APP	1	12/07/15	Approval as noted
12/10/2015	FOR FAB	2		
		3		
		4		
		5		
		6		
		7		
		8		
		9		
		10		



Per AISC Steel Construction Manual 13th Edition 16.3.3 Commentary. While it is the Fabricator's responsibility to report any discrepancies that are discovered in the Contract Documents, it is not the Fabricator's responsibility to discover discrepancies, including those that are associated with the coordination of the various design disciplines. The quality of the Contract Documents is the responsibility of the entities that produce those documents.

